

*MP*bolagen

Global Trac

TRACK LIGHTNING



Track lightning for stores

The tracks that make it easy to move fixtures from one location to another, and where multiple brands fit. All suspension details are compatible regardless of the type of track chosen.





Global Trac – track lighting

- one of Europe's most used systems for stores. The tracks make it easy to move fixtures from one location to another, and several brands are compatible. All suspension details fit regardless of the type of track chosen.

Three-phase track in aluminum

available in four different lengths in white, black, and gray finishes. The recommended pendant spacing is center-to-center 1 meter, with a minimum height of 2.2 meters. If the track is placed in enclosed spaces, such as a closed display window, it may be positioned lower—however, with a minimum of 50 mm above the floor. NOTE: The track must not be installed with the opening facing upward.

Common accessories

for both recessed and surface-mounted installation. The track can be cut to the desired length, and with a special tool, the conductors can be easily bent afterward. Pro and Pulse contact rails are mounted against the ceiling/wall or suspended from the ceiling. The Pulse version has the same features as the Pro version but with the capability to handle Dali – 0-10 V, etc..

Recessed track lighting Pro and Pulse

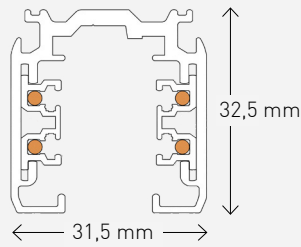
can be installed in suspended ceilings. They can also be mounted against the ceiling/wall or suspended from the ceiling. The Pulse version have the same features as the Pro version but with the capability to handle Dali – 0-10 V, etc.

Note that!

Accessories for power tracks for lighting are the same for recessed and surface-mounted installations. The red line on joints and branches should be fully visible when selecting items for an installation – see example on page 14.

Global Trac – track lighting

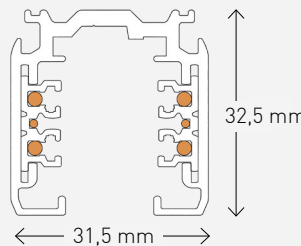
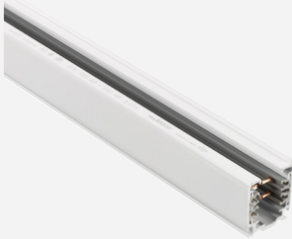
Global track – PRO



Installed against the ceiling/wall or suspended from the ceiling. For wall mounting, use wall bracket SKB21 (see page 9). Suitable center-to-center spacing is 1 meter. 230/400 V, 16 A, IP 20.

L mm	Grey	E-no	Black	E-no	White	E-no
1000	XTS 4100-1	74 001 69	XTS 4100-2	74 003 81	XTS 4100-3	74 001 68
2000	XTS 4200-1	74 001 67	XTS 4200-2	74 002 92	XTS 4200-3	74 001 66
3000	XTS 4300-1	74 001 65	XTS 4300-2	74 002 93	XTS 4300-3	74 001 64
4000	XTS 4400-1	74 001 63	XTS 4400-2	74 002 94	XTS 4400-3	74 001 62

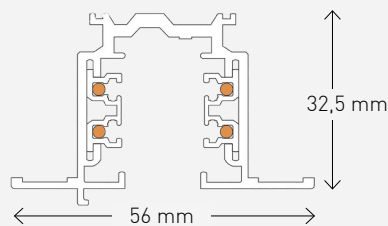
Global track – PULSE



Installed against the ceiling/wall or suspended from the ceiling. For wall mounting, use wall bracket SKB21 (see page 9). Recommended center-to-center spacing is 1 meter. 230/400 V, 16 A, IP 20.

L mm	Grey	E-no	Black	E-no	White	E-no
1000	XTSC 6100-1	74 030 15	XTSC 6100-2	74 003 86	XTSC 6100-3	74 003 87
2000	XTSC 6200-1	74 030 19	XTSC 6200-2	74 003 88	XTSC 6200-3	74 003 89
3000	XTSC 6300-1	74 030 22	XTSC 6300-2	74 003 90	XTSC 6300-3	74 003 91
4000	XTSC 6400-1	74 030 30	XTSC 6400-2	74 003 92	XTSC 6400-3	74 003 93

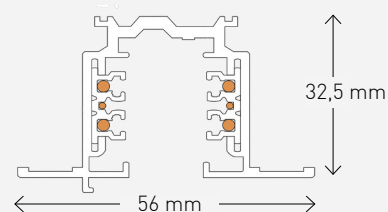
Global track – PRO recessed



For recessed installation. Installed against the ceiling/wall or suspended from the ceiling. Recommended center-to-center spacing is 1 meter. 230/400 V, 16 A, IP 20.

L mm	Grey	E-no	Black	E-no	White	E-no
1000	XTSF 4100-1	74 030 35	XTSF 4100-2	74 027 30	XTSF 4100-3	74 001 60
2000	XTSF 4200-1	74 030 36	XTSF 4200-2	74 027 31	XTSF 4200-3	74 001 58
3000	XTSF 4300-1	74 030 37	XTSF 4300-2	74 027 32	XTSF 4300-3	74 004 26

Global track – PULSE recessed



For recessed installation. Installed against the ceiling/wall or suspended from the ceiling. Recommended center-to-center spacing is 1 meter. 230/400 V, 16 A, IP 20.

L mm	Grey	E-no	Black	E-no	White	E-no
1000	XTSCF 6100-1	74 030 31	XTSCF 6100-2	74 027 22	XTSCF 6100-3	74 027 23
2000	XTSCF 6200-1	74 030 32	XTSCF 6200-2	74 027 24	XTSCF 6200-3	74 027 25
3000	XTSCF 6300-1	74 030 33	XTSCF 6300-2	74 027 26	XTSCF 6300-3	74 027 27

Global Trac – track lighting

Straight connector

Suitable for both recessed and surface-mounted tracks.



Model	Grey	E-no	Black	E-no	White	E-no
Pro	XTS 21-1	74 001 93	XTS 21-2	74 003 73	XTS 21-3	74 001 92
Pulse	XTSC 621-1	74 030 20	XTSC 621-2	74 004 00	XTSC 621-3	74 004 01

Middle feed

Middle feed is compatible with both recessed and surface-mounted tracks.



Model	Grey	E-no	Black	E-no	White	E-no
Pro	XTS 14-1	74 001 95	XTS 14-2	74 003 72	XTS 14-3	74 001 94
Pulse	XTSC 614-1	74 030 18	XTSC 614-2	74 003 98	XTSC 614-3	74 003 99

Flexible corner connector

Can be directed in all directions.



Model	Grey	E-no	Black	E-no	White	E-no
Pro	XTS 23-1	74 001 91	XTS 23-2	74 002 90	XTS 23-3	74 001 90
Pulse	XTSC 623-1	74 030 21	XTSC 623-2	74 004 02	XTSC 623-3	74 004 03

Adjustable corner connector – PRO

Adjustable corner.



Grey	E-no	Black	E-no	White	E-no
XTS 24-1	74 001 89	XTS 24-2	74 003 74	XTS 24-3	74 001 88

End cap

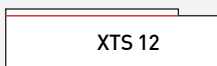
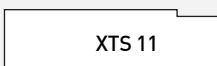
Compatible with both recessed and surface-mounted tracks.



Grey	E-no	Black	E-no	White	E-no
XTS 41-1	74 001 73	XTS 41-2	74 002 91	XTS 41-3	74 001 72

End feed– PRO

End feed with power supply option.



Grey	E-no	Black	E-no	White	E-no
XTS 11-1	74 001 99	XTS 11-2	74 002 89	XTS 11-3	74 001 98
XTS 12-1	74 001 97	XTS 12-2	74 002 96	XTS 12-3	74 001 96

Global Trac – track lighting

End feed – PULSE

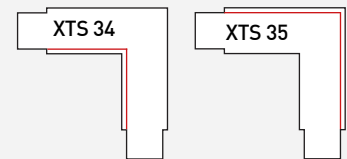
End feed with power supply option.



Grey	E-no	Black	E-no	White	E-no
XTSC 611-1	74 030 16	XTSC 611-2	74 003 94	XTSC 611-3	74 003 95
XTSC 612-1	74 030 17	XTSC 612-2	74 003 96	XTSC 612-3	74 003 97

L-feed – PRO

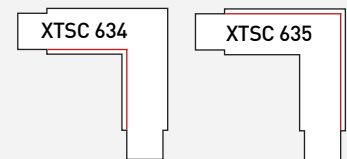
Connector with power supply option



Grey	E-no	Black	E-no	White	E-no
XTS 34-1	74 001 87	XTS 34-2	74 002 98	XTS 34-3	74 001 86
XTS 35-1	74 001 85	XTS 35-2	74 003 75	XTS 35-3	74 001 84

L-feed – PULSE

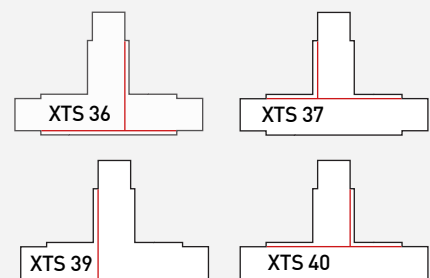
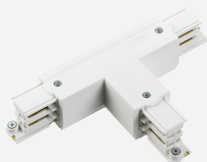
Connector with power supply option



Grey	E-no	Black	E-no	White	E-no
XTSC 634-1	74 030 23	XTSC 634-2	74 004 04	XTSC 634-3	74 004 05
XTSC 635-1	74 030 24	XTSC 635-2	74 004 06	XTSC 635-3	74 004 07

T-feed – PRO

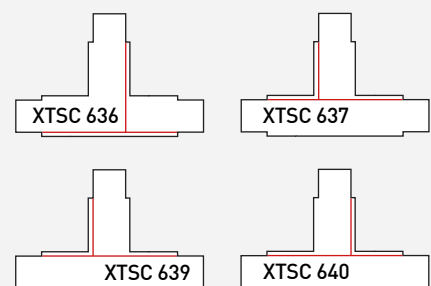
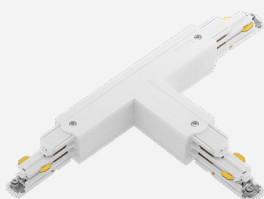
Connector with power supply option



Grey	E-no	Black	E-no	White	E-no
XTS 36-1	74 001 83	XTS 36-2	74 003 76	XTS 36-3	74 001 82
XTS 37-1	74 001 81	XTS 37-2	74 003 77	XTS 37-3	74 001 80
XTS 39-1	74 001 77	XTS 39-2	74 003 79	XTS 39-3	74 001 76
XTS 40-1	74 001 75	XTS 40-2	74 003 80	XTS 40-3	74 001 74

T-feed – PULSE

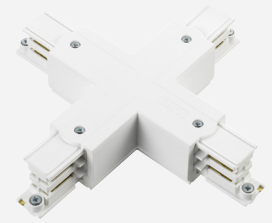
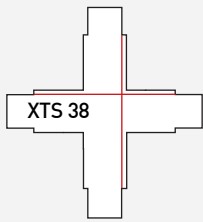
Connector with power supply option



Grey	E-no	Black	E-no	White	E-no
XTSC 636-1	74 030 25	XTSC 636-2	74 004 08	XTSC 636-3	74 004 09
XTSC 637-1	74 030 26	XTSC 637-2	74 004 10	XTSC 637-3	74 004 11
XTSC 639-1	74 030 28	XTSC 639-2	74 004 12	XTSC 639-3	74 004 13
XTSC 640-1	74 030 29	XTSC 640-2	74 004 14	XTSC 640-3	74 004 15

X-feed- PRO

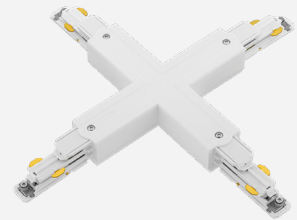
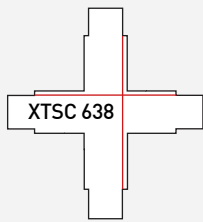
End feed with power supply option.



Grey	E-no	Black	E-no	White	E-no
XTS 38-1	74 001 79	XTS 38-2	74 003 78	XTS 38-3	74 001 78

X-feed – PULSE

End feed with power supply option.



Grey	E-no	Black	E-no	White	E-no
XTSC 638-1	74 030 27	XTSC 638-2	74 004 16	XTSC 638-3	74 004 17



Global Trac – track lighting

Wire suspension set



Set with wire and ceiling clamp.
Max.load: 150 N.

L mm	Grey	E-no	Black	E-no	White	E-no
1500	SPW 11 WLC-1/1,5 M	74 031 00	SPW 11 WLC-2/1,5 M	74 031 03	SPW 11 WLC-3/1,5 M	74 031 06
3000	SPW 11 WLC-1/3 M	74 031 01	SPW 11 WLC-2/3 M	74 031 04	SPW 11 WLC-3/3 M	74 031 07
5000	SPW 11 WLC-1/5 M	74 031 02	SPW 11 WLC-2/5 M	74 031 05	SPW 11 WLC-3/5 M	74 031 08

Wire suspension set



Set with wire and ceiling clamp.
Max.load: 150 N.

L mm	Grey	E-no	Black	E-no	White	E-no
1500	SPW 12 SK-1/1,5 M	74 028 94	SPW 12 SK-2/1,5 M	74 028 97	SPW 12 SK-3/1,5 M	74 002 08
3000	SPW 12 SK-1/3 M	74 028 95	SPW 12 SK-2/3 M	74 028 98	SPW 12 SK-3/3 M	74 030 14
5000	SPW 12 SK-1/5 M	74 028 96	SPW 12 SK-2/5 M	74 028 99	SPW 12 SK-3/5 M	74 003 71

Wire suspension set



Wire with locknut. Max.load: 150 N.

L mm	Steel	E-no
1500	SKB 34-1	-
3000	SKB 34-1/3M	74 002 10
4000	SKB 34-1/4 M	-
5000	SKB 34-1/5	-

Track mounting clamp – wire 1,5 mm



Clip with height adjust for wire.
Max.load:150 N.

Grey	E-no	Black	E-no	White	E-no
SKB11 WLC-1	74 002 35	SKB11 WLC-2	74 003 28	SKB11 WLC-3	74 002 36

Track mounting clamp

Clip for T-bar. Max.load: 50 N.



Grey	E-no	Black	E-no	White	E-no
SKB11 T-1	74 002 33	SKB11 T-2	74 004 19	SKB11 T-3	74 002 34

Track mounting clamp

Clip for M6 mounting. Max.load: 50 N.



Grey	E-no	Black	E-no	White	E-no
SKB11 R-1	74 002 31	SKB 11 R-2	74 004 18	SKB 11 R-3	74 002 32

Global Trac – track lighting

Suspension clamp

For Pro and Pulse. Can also be used as reinforcement at the joint. Max.load: 200 N



Grey	E-no	Black	E-no	White	E-no
SKB 18-1	-	SKB 18-2	-	SKB 18-3	74 004 27

Rod M6 1m set

Cut into length needed. Max.load: 200 N.
The plastic-coated threaded rod is gray when the plastic is removed.



Black	E-no	White	E-no
SPR 6-2	74 004 20	SPR 6-3	74 002 39

Rod M6 extension 1m set

Cut into length needed.
The plastic-coated threaded rod is gray when the plastic is removed.



Black	E-no	White	E-no
SPR 61-2	74 002 38	SPR 61-3	74 028 88

Track mounting clamp

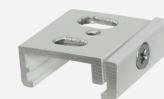
Clamp with M6 mounting
Max.load: 200 N.



Grey	E-no	Black	E-no	White	E-no
SP4 R-1	-	SP4 R-2	-	SP4 R-3	74 002 09

Track mounting clamp

Clamp for rod and wire. Max.load: 200 N.



Grey	E-no	Black	E-no	White	E-no
SKB 12-1	74 002 12	SKB 12-2	74 003 29	SKB 12-3	74 002 11

Track mounting clamp

Wall clamp. Max.load: 100 N.



Grey	E-no
SKB 21-1	74 002 37

Global Trac – track lighting

Multi adapter – PRO, 10 A



Adapter with phase selector and screw connection.
To be supplemented with strain relief.
Max.load: 100 N.

Grey	E-no	Black	E-no	White	E-no
XTSA 68-1	74 002 44	XTSA 68-2	74 002 95	XTSA 68-3	74 002 01

Multi adapter – PRO, 10 A



Adapter with phase selector and screw connection.
To be supplemented with strain relief.
Max.load: 100 N.

Tool GB 66 CT – see page 12.

Grey	E-no	Black	E-no	White	E-no
GA 100-1	74 002 30	GA 100-2	74 031 47	GA 100-3	74 002 04

Multi adapter – PULSE, 10 A



Adapter with phase selector and screw connection.
To be supplemented with strain relief.
Max.load: 100 N.

Tool GB 66 CT – see page 12.

Grey	E-no	Black	E-no	White	E-no
GAC 600-1	74 031 48	GAC 600-2	74 004 21	GAC 600-3	74 004 22

Schuko adapter – PRO, 10 A



Max.load: 100 N.

Black	E-no	White	E-no
XTSA 67S-2	74 031 49	XTSA 67S-3	74 002 43

Adapter – 3-phase 16 A, 400 V



Adapter with screw connection. To be supplemented with strain relief.
Maxlast: 100 N.

Grey	E-no	Black	E-no	White	E-no
XTSA 67-1	74 031 53	XTSA 67-2	74 031 54	XTSA 67-3	74 002 02

Adapter with strain relief



Internal diameter: 7 mm.

Grey	E-no	Black	E-no	White	E-no
GA 510-1	74 031 50	GA 510-2	74 004 24	GA 510-3	74 004 25

Adapter with strain relief

Strain relief adapter used with fixed nipple
M10/13 - see below.



Model	Black	E-no	White	E-no
M10	XTSA 510-2	74 003 84	XTSA 510-3	74 002 42
M13	XTSA 513-2	74 003 85	XTSA 513-3	74 020 58

Fixed nipple M10/13

Fits all adapters.



Model	Alu	E-no
M10	XTS 58/8-9	74 020 59
M13	XTS 56/8.6-9	74 003 82

Adapter connectors Fixpoint – PRO

Recessed box for ceiling box - see below.



White	E-no
XTSA 71-3	74 002 00

Fixpoint ceiling box – PRO

Ceiling box for multi adapter – 3-phase.



White	E-no
GA 70-3	74 002 03

Hook base – 2 mm

Base for hook XTAK 11-1 - see below,
or 2 mm wire.



Grey	E-no	Black	E-no	White	E-no
XTAK 142-1	74 031 51	XTAK 142-2	74 031 52	XTAK 142-3	74 002 05

Hook 2 mm

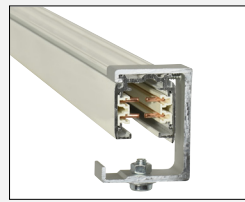
Hook for XTAK 142 – see above.



Model	E-no
XTAK 11-1	74 002 06

Global Trac – track lightning

Clamp



For mounting underneath the track.
Max.load: 120 N.

Gray	E-no
XTAO 16-1	74 004 28

Cover plate



Cover plate for recessed installation.
Installed under the feeds.
Fits: XTS 34-40 and XTSC 634-640.

Black	E-no	White	E-no	Fits
XTSF 30-2	74 032 27	XTSF 30-3	74 001 70	Pro
XTSF 630-2	-	XTSF 630-3	-	Pulse

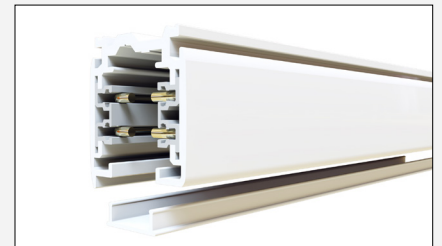
Cover plate



Cover plate for recessed installation.
Installed under the feeds.
Fits: XTS 11, XTS 12, XTS 14, XTSC 614, XTSC 611 and XTSC 612.

Black	E-no	White	E-no	Fits
XTSF 10-2	74 032 26	XTSF 10-3	74 001 71	Pro
XTSF 610-2	-	XTSF 610-3	-	Pulse

Cover strip for track opening



Model	E-no
XTSP11-3 White	74 024 49
XTSP11-2 Black	74 024 50

Slot connection tool



Slot connection tool for multi adapter GA 100/GAC 600.

Model	E-no
GB 66 CT	74 004 23

Bending tool



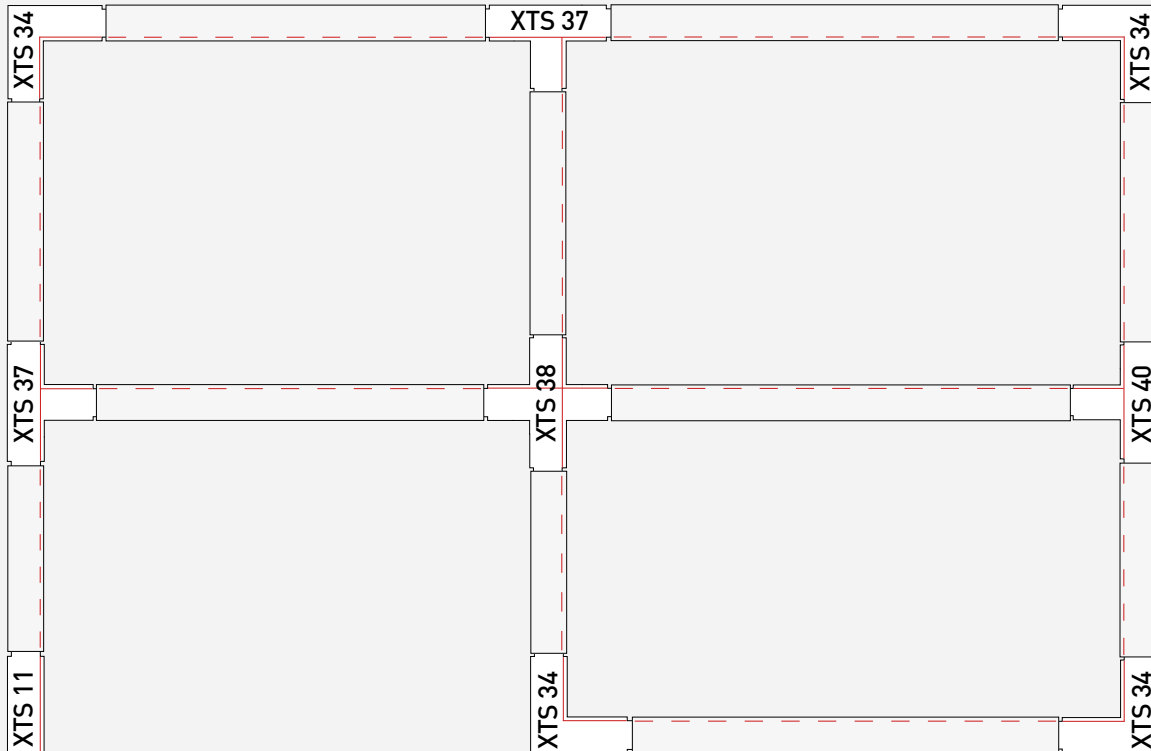
Used to bend the conductors when cutting the track.

Model	E-no
XTSV 12	74 002 13

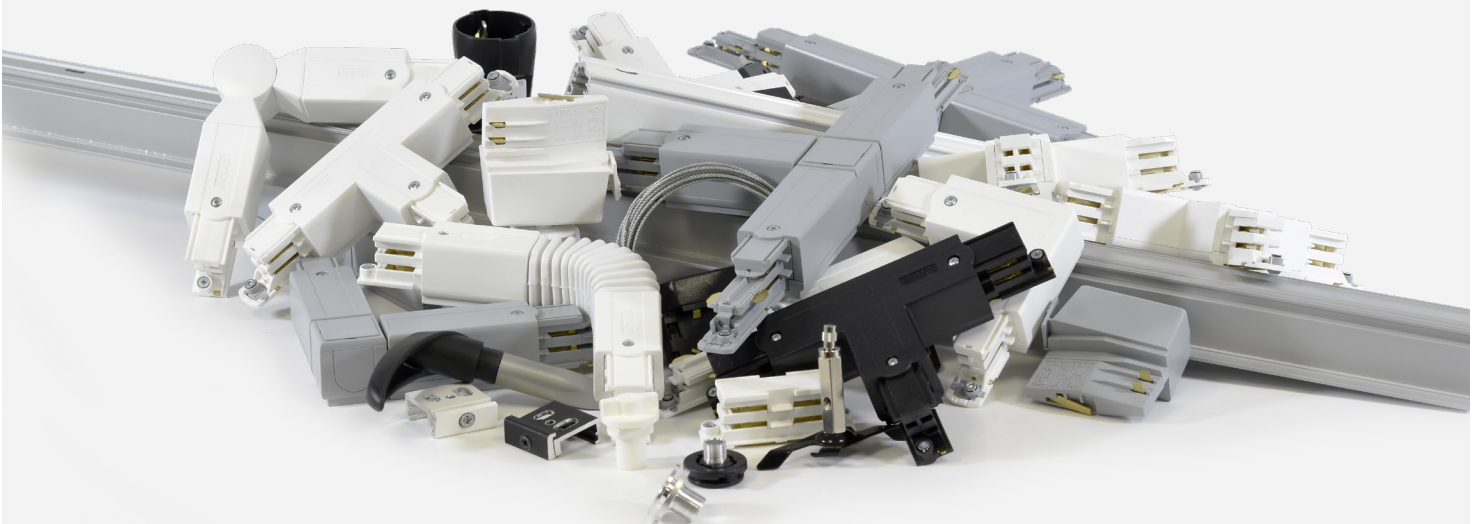


Installation with joints and power supply units from the PRO series.
The red line indicates polarity ridge.

NOTE: This example is shown with the opening of the track lighting facing upward.



Complicated? – We're here to help!



Contact us for help at offert@mpbolagen.se

GLOBAL *trac*[®]

Track lightning adds style!



Global Trac provides a stylish impression in any environment. Contact MP bolagen for information and guidance. We are your best support and have extensive expertise in cable management and installation.

MPbolagen

Box 3 • 574 21 Vetlanda • tel +46 (0)383-76 36 00
info@mpbolagen.se • mpbolagen.se

Contact us!

Your natural choice partner!

The email address is written according to the principle `firstname.lastname@mpbolagen.se`



Viktor Karlsson
Sales Manger
+46 (0)70-219 61 50



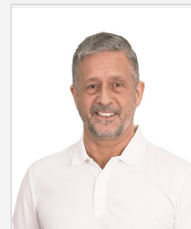
Christian Antsvee
Key account manager
+46 (0)70-689 05 39



Anders Karlsson
Marketing Director
+46 (0)383-76 36 12
+46 (0)70-696 36 12



Thomas Petersson
Salesperson,
Stockholm
+46 (0)70-753 70 64



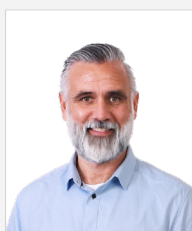
Ronnie Lundh
Salesperson,
Stockholm
+46 (0)72-748 78 88



Kenneth Olofsson
Salesperson, north
+46 (0)70-398 60 20



Elias Kalla
Salesperson, north
+46 (0)72-576 36 37



Niklas Karlsson
Salesperson, middle
+46 (0)70-377 36 03



Fredrik Larsson
Salesperson, west
+46 (0)70-248 58 39



Gustav Petersson
Salesperson, east
+46 (0)73-037 80 23



Pontus Olsson
Salesperson, south
+46 (0)73-715 55 96



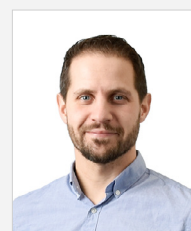
Patrik Hillström
Product Manager, steel
+46 (0)383-76 36 16
+46 (0)70-661 12 55



Johan Petersson
Export Manager
Electricrtical prod.
+46 (0)383-76 36 07
+46 (0)70-576 36 07



Peter Fuchs
In-house sales
Manager
+46 (0)383-76 36 09
+46 (0)72-576 36 09



Marcus Gunnevik
In-house salespers.
+46 (0)383-76 36 10
+46 (0)70-336 25 02



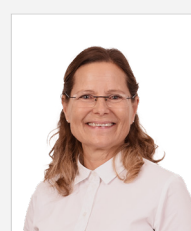
Johannes Nordlund
In-house salespers.
+46 (0)383-76 36 05
+46 (0)73-324 40 40



Christian Boman
In-house salespers.
+46 (0)383-76 36 22
+46 (0)70-225 91 08



Susanne Sixtensson
Orders
+46 (0)383-76 36 11



Eva Ferenczy
Orders
+46 (0)383-76 36 18



Maria Johansson
Sales assistant
+46 (0)383-76 36 01