

MPbolagen

Installation products

CABLE MANAGEMENT



—
SERVICE POLES
WALL TRUNKINGS
FLOOR BOXES



WE ARE REDUCING OUR CARBON FOOTPRINT

Conscious choices in a sustainable direction

Low-carbon aluminum is a natural choice for us. It is now used in products such as wall trunkings, service poles, and strapping profile. We maintain the same high quality, and strength, but the climate impact is significantly reduced.

The raw material we now use is a certified product with a climate footprint of no more than 4 kilograms of carbon dioxide equivalents per kilogram of finished aluminum. That is less than a quarter of the global average. Efforts are underway to further reduce it in the future.

Our collective term for products and other sustainability efforts we call MP bolagen Reduced.

A complete solution for all cable pathways requires a final product that seamlessly integrates the ductwork from cable ladders or cable trays. This brochure covers service poles, wall trunkings, and floor boxes that together contribute to a comprehensive cable management solution.

The service poles have been part of MP's product range since 2004 and, through customer feedback and requests, have evolved into the product we deliver today.

Wall trunkings are now a natural part of a complete installation and have, since 2009, expanded into several different articles, including new outlets and more.

Floor boxes are often used in car showrooms and conference rooms when a more discreet installation is desired. The German supplier we have been working with since 2009 places a strong emphasis on quality and provides many solutions that may not always be visible in our catalogs.

MP-FLEX

MP-flex, that can be mounted on the floor or on the wall. Easy installation with our smart bottom bracket, which then clicks into the wall bracket at the top. MP-flex is available as standard in six different configurations depending on the desired equipment.

Example article is E-no:
11 782 03



Service poles

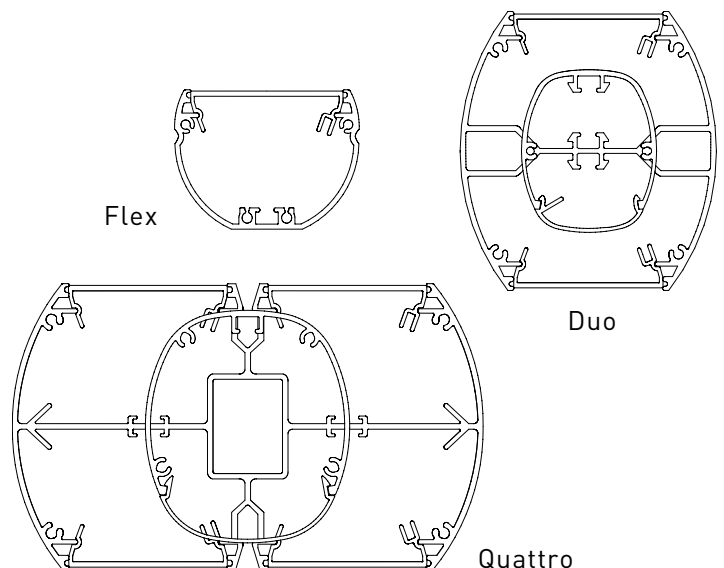
Available in three different variants, we refer to them as Flex, Duo, and Quattro. They can be positioned on the floor or mounted on the wall.

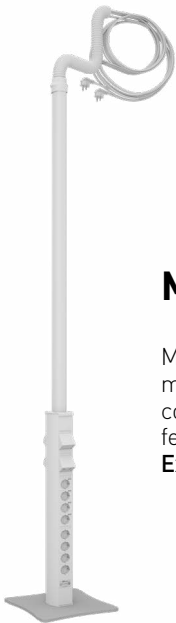
MP-flex has a one-sided profile that can be placed on the floor or wall.

MP-Duo has a double-sided profile that can serve multiple workstations without the outlet groups becoming too high. Can be positioned on the floor or suspended from the ceiling.

MP-Quattro is double-sided with four separate compartments for equipping, designed to be placed on the floor.

The service poles are manufactured in Ekenässjön, Småland, and in addition to the standard colors of white and black, as well as natural anodized gray, they can be custom-painted in any color upon agreement.





MP-DUO

MP-Duo has a double-sided profile that can serve multiple workstations without the outlet groups becoming too high. MP-DUO can have three different feet but cannot be mounted on the wall

Example article is E-no: 11 790 11



MP-QUATTRO

MP-Quattro has a double-sided profile with four compartments, two on each side. It supplies four or more workstations depending on the desired equipment. It is positioned on the floor and is available with both a design foot and a steel foot.

Example article is E-no: 11 790 18



If you need assistance in calculating quantities and accessories, you can easily do so in our configurator.

<https://konfigurator.mpbolagen.se>



MP-DUO U601V

MP-DUO U601V

DUO-service post U616V

DUO-service post is a popular post that is often placed under desks or conference tables. This profile is also double-sided to keep the construction low. The power supply comes from the floor.

E-no: 11 790 19





Suspended post U610V

A height-adjustable post, also known as a suspended post. A post that is also based on the double-sided Duo profile. Ideally placed in classrooms or workspaces where it is desirable to raise the outlets when not in use. It is available with two types of suspension systems if a fixed height is not desired, such as a wire. The balance block with a roller blind function is pulled out and stops at the desired height. The other suspension is similar but equipped with a balancing function to ensure that the outlets never rise higher than one can reach.

E-no: 11 790 15

Wall trunkings

Wall trunkings are used in offices or open office spaces along both exterior and interior walls. Power is typically supplied from the ceiling using a feeder profile. Channels that pass through walls can be sound-insulated.

All Wall trunkings are three meters long, which minimizes the number of joints in typical office installations. The back and partition walls of the profile are perforated for a quicker and easier assembly.

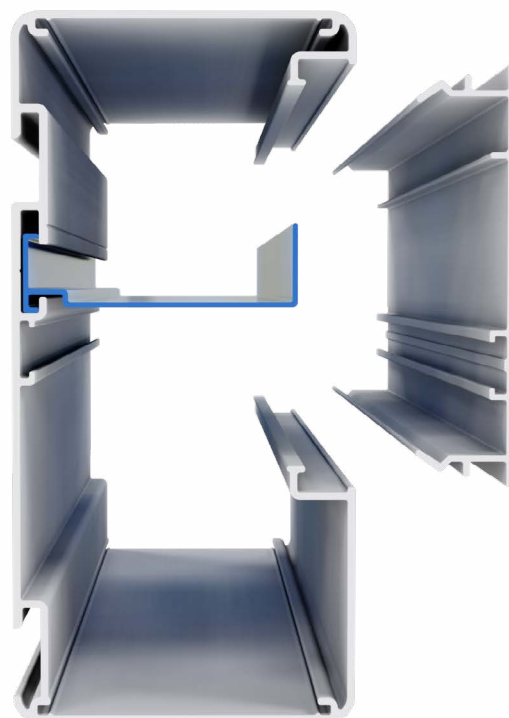
Our Wall trunkings share many accessories, reducing both stockholding and the number of details needed for installation.

When applied to exterior walls, they are installed with wall brackets and ventilation grilles so that heat from radiators can be transported efficiently.

The wall brackets for our wall trunkings are of the snap-on model and have a built-in holder for ventilation grilles. One ventilation grille per 25 mm bracket width. Therefore, a 100 mm bracket can have four ventilation grilles.

All Wall trunkings can be divided with the help of intermediate shelves consisting of one or two shelves, depending on preference.

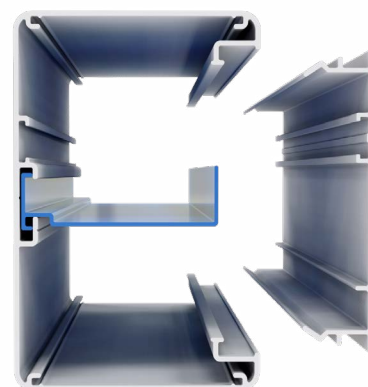
They are available in white lacquered and natural anodized aluminum. Some of the models are also available in black lacquered finish.



Wall trunking TB1310-3

Wall trunkings with a larger space for cables, which can be mounted on a wall bracket if desired.
Dimension: 135x65 mm.

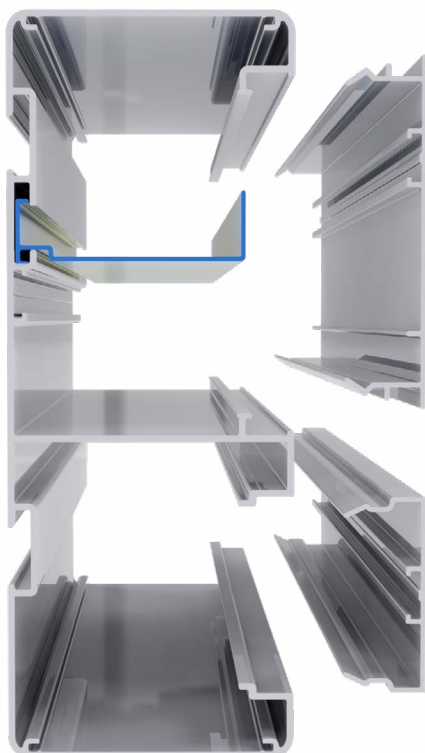
Example article is E-no: 11 793 55
Available in white, natural anodized, or black finish.



Wall trunking TB1010

The smallest wall trunking, which is directly mounted on the wall without a wall bracket. Used when there is a smaller need for cables and space.
Dimensions: 100x65 mm.

Example article is E-no: 11 793 51
Available in white, natural anodized, or black finish.



Wall trunking TB1740-3

Wall trunking with a separate compartment for, for example, the installation of low-voltage cabling. The partition wall is perforated to facilitate cable routing up to the outlets. Dimensions: 170x65 mm.

Example article is E-no: 11 793 61
Available in white, natural anodized, or black finish.



Corner TBC

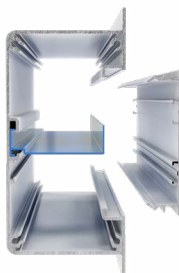
The corners are universal and fit both as exterior and interior corners.



Wall trunking TB1210

A Wall trunking with an arched profile that is ideally mounted vertically. It can be equipped with an intermediate shelf for the separation of different cable types. The channel is often installed next to whiteboards and similar fixtures. Dimensions: 120x80 mm.

E-no: 11 788 90



Recessed trunking TB1332

A discreet Wall trunking that is recessed into the wall and only extends 65 mm. Dimensions: 148x65 mm.

E-no: 11 788 64



If you need assistance in calculating quantities and accessories, you can easily do so in our configurator.

<https://konfigurator.mpbolagen.se>

Cover



Cover for data outlets in the most common formats – Keystone, AMP, Systemax, and Actassi. Includes labeling window and dust cover

Example article is E-no: 11 792 82
Available in white or black finish.



Wall trunking TB1310-2

Example article is E-no: 11 782 24

Available in white or black finish

Wire mesh tray 729E

E-no: 11 164 71



Socket outlet

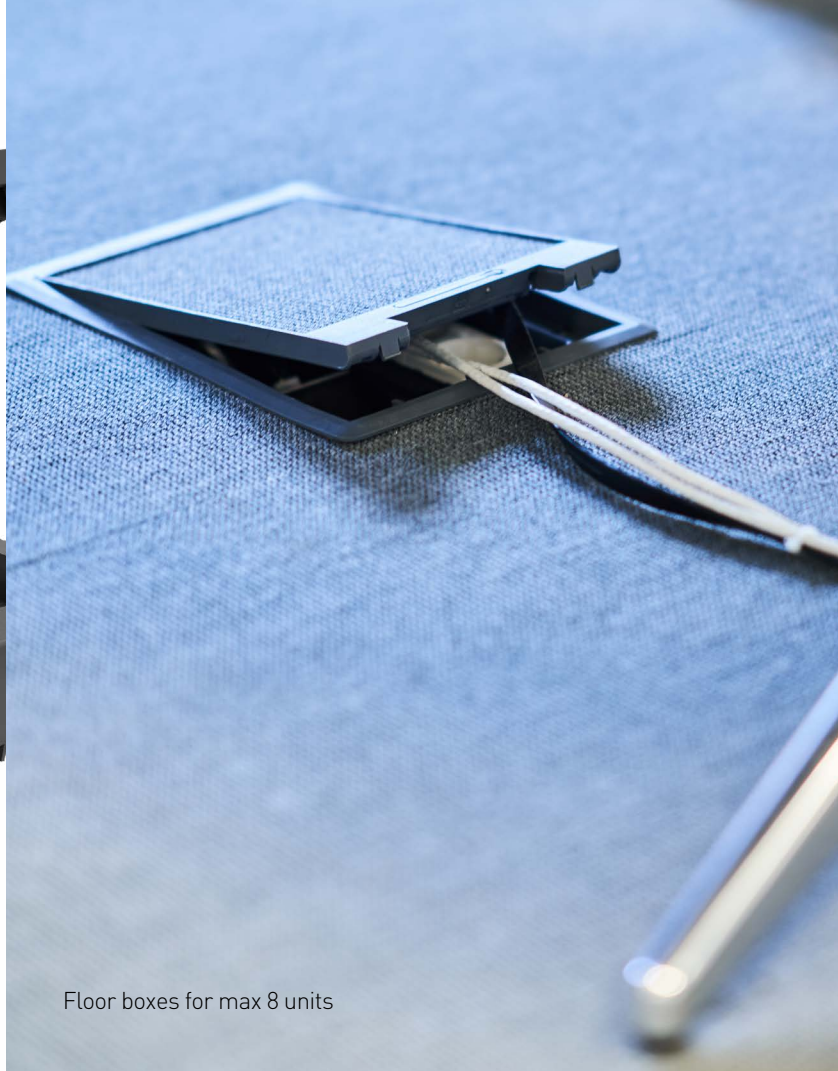
Socket outlets in sizes 2-, 4-, 6-, or 8-way. The colors are gray or white and are available with or without DATA labeling for prioritized power. EnstoNet in sizes up to 4-way is offered when outlets with quick coupling are desired.

Example article is E-no: 11 792 73

Available in white or black finish



Floor box in polyamide with units for power and data outlets, RJ45.



Floor boxes for max 8 units



Stainless floor box

E-no: 11 770 40

Adapted for equipping up to 4 units. The maximum load on the cover is a substantial 2000 kg, and in the closed position, it achieves an IP 54 rating



Floor box in polyamide

E-no: 11 790 54

Used in dry-cleaned office environments or similar settings. A floor box for up to 12 units for power and low-voltage. The lid can be filled with a carpet or parquet with a maximum thickness of 10 mm. Available with an insert for low installation height, 65 mm, enabling the installation of a total of 8 units.



Bodo Aluminum floor box BODO N

E-no: 11 790 50

The floor box, which is drivable, is available in two different versions. One with two power outlets and one with one power outlet and one data outlet, RJ45. It is preferably used in tougher environments. It has an IP66 rating when closed and up to IP43 when in use with included rubber seals.

The lid can withstand a load of 1500 kg both in the closed and open positions. To protect the cables in use, a tube outlet (included) is used, and when the box is not in use, you can turn it downwards.



Bodo plastic floor box Bodo T-G

E-no: 11 790 51

A smaller floor box suitable when only one power outlet is needed, with an included tube outlet for cables. Used in dry-cleaned office environments. Maximum load of 150 kg on the lid.

Floor box in stainless steel

E-no: 11 790 60

The stainless steel floor boxes are available in various designs, suitable for both wet and dry-cleaned floors. They come with and without a mat flange for installations in tiles and parquet. The box without a mat flange is recessed into the floor surface, providing a discreet appearance with no edges for dirt to accumulate. It can be equipped with up to 12 units.

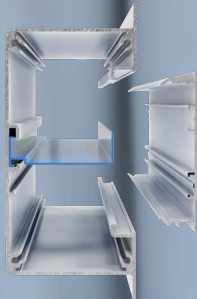


Floor boxes

Floor boxes are primarily used when you don't want anything hanging down from the ceiling. They are often chosen in conference rooms or business galleries, both for permanent or temporary sales locations, and similar settings. If you wish to embed the floor boxes, there are embedding details and form pieces available in various sizes.

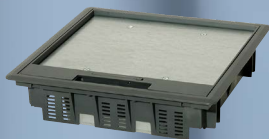


Bodo N



Recessed trunking TB1332-3

Recessed trunkings provides a discreet impression, and despite their low installation depth of 65 mm, these can be equipped with power and data outlets, switches, room sensors, etc. The 3-meter length minimizes the number of joints



Floor box in plastic UEK

Plastic (polyamide) floor boxes are a cost-effective choice for floor installations. The outlets are recessed into the floor, and the lid can withstand a load of 200 kg. The plastic does not generate smoke in the event of a fire. A stainless steel version is available for those who prefer a more exclusive option.





Floor box in plastic



About MP bolagen

MP bolagen develop, manufacture, and market a comprehensive range of installation products for cable management. The production is modern and highly automated, with the majority of production tools being manufactured in-house. High quality with fast and secure deliveries is something that we at MP bolagen consider important. We constantly strive for improved solutions that reduce installation time. MP bolagen are quality-assured according to ISO 9001:2015 and environmentally certified according to ISO 14001:2015.

MPbolagen

MP bolagen Industri AB Box 3, Storgatan 25 D, SE-574 21 Vetlanda, Sweden
Tel +46 (0)383 76 36 00, www.mpbolagen.se

The products we manufacture are 3rd-party certified according to below.

