

Service poles/posts

have been designed together with architects, consultants and customers.

They are designed to blend into the environment and can be customized as needed.

They are manufactured of aluminum and come in a white and black finish as standard.

The service poles are designed for one to four users, and can be installed tension-mounted between the floor and ceiling, stand alone on feet or clipped onto the wall.

The service poles are equipped as required with socket outlets for electricity and data, etc.

- **MP-Flex**, elegant and simple design. A flexible pole that discreetly blends in with the environment.
- **MP-Duo**, with a split design. Discreet in most environments and equipped for one or two users.
- **MP-Quattro**, with a split design. Discreet in most environments and equipped for one or four users.
- **MP-Service posts** (Duo) Fed from below and available in two variants – one with mobile base and one with a fixed base plate to screw down.

• S-marking quality and safety

The products are CE-marked and 3rd party certified by: Semko, Nemko and Fimko.



Selection of surface finish

Equipotential bonding

Cable ladders



Cable ladders RF/SF



Cable trays/luminaire rails



Wire mesh trays



Profiles



MP-19" racks



Potential connection



Cable clamps



Ceiling brackets
concrete screws



Service poles/posts



Floor boxes



Wall trunkings



E-number, weight, package

Service poles

MP-Flex

The Flex pole can be installed in different ways:

- stand alone on base
- free next to wall
- on the wall with a wall bracket
- on desktops.

Aluminum pole – available in white finish (RAL 9010) and black (RAL9005)

Equipped as set out below or customized on request.

Easily create a service pole:

<https://konfigurator.mpbolagen.se/>

Flex – standard poles – select below.

U 500 – U 501 – U 502

2 m flexible tube Ø50 mm.

Total cable length 7.5 m - electricity/data.

Network cable Cat6 UTP

U521 – U522.

Total cable length 5 m – electricity/data.

Network cable Cat6 S/FTP.

U 530.

Total cable length 7.5 m - electricity/data.

Network cable Cat6 UTP

USB charging 15W

Dimensions
equipped
580-670 mm.



(the base is an accessory)

Equipped

Model	General/ data-power	USB-A/C Charging	RJ45	Blind cover
U 500 V/SV	6/0 sockets	-	2 pcs.	-
U 501 V	4/4 sockets	-	2 pcs.	1 pcs.
U 502 V	4/4 sockets	-	4 pcs.	1 pcs.
U 521 V/SV	6/0 sockets	-	2 pcs.	-
U 522 V	4/4 sockets	-	2 pcs.	-
U 530 V/SV	6/0 sockets	1/1 pcs	2 pcs	-

Model	White/black	E-no
Stand alone – 2100 mm	MP-U 500 V	11 744 88
Stand alone – 2100 mm	MP-U 500 SV	11 782 03
Stand alone – 2100 mm	MP-U 501 V	11 790 01
Stand alone – 2100 mm	MP-U 502 V	11 790 04
Stand alone – 2100 mm	MP-U 521 V	11 782 17
Stand alone – 2100 mm	MP-U 521 SV	11 785 37
Stand alone – 2100 mm	MP-U 522 V	11 782 18
Stand alone – 2100 mm	MP-U 530 V	11 787 88
Stand alone – 2100 mm	MP-U 530 SV	11 787 89

The last letter in the MP No. denotes

158 the surface finish according to: V = White RAL 9010 G = Grey RAL 7012 SV = Black RAL 9005

MP-Duo

The Duo pole can be installed in different ways:

- stand alone on base
- between the floor and ceiling.

Double-sided aluminium pole for two users
– available in white (RAL 9010) and black (RAL 9005).

Equipped as set out below or customized on request.

Easily create a service pole:

<https://konfigurator.mpbolagen.se/>

Duo – standard poles – select below.

U 600 – U 601 – U 602

2 m flexible tube Ø50 mm.

Total cable length 7.5 m - electricity/data.

U 621

2 m flexible tube Ø50 mm.

Total cable length 5 m - electricity/data.

Equipped (per side/workplace)

Model	General power	Data power	RJ45	Blind cover
U 600 V/SV	6 sockets	–	2 pcs.	–
U 601 V	4 sockets	4 sockets	2 pcs.	1 pcs.
U 602 V	4 sockets	4 sockets	4 pcs.	–
U 621 V/SV	6 sockets	–	2 pcs.	–

Model	White/black	E-no
Stand alone – 2100 mm	MP-U 601 V	11 790 11
Stand alone – 2100 mm	MP-U 602 V	11 790 14
Stand alone – 2100 mm	MP-U 600 V	11 778 48
Stand alone – 2100 mm	MP-U 600 SV	11 785 35
Stand alone – 2100 mm	MP-U 621 V	11 782 21
Stand alone – 2100 mm	MP-U 621 SV	11 785 38

The last letter in the MP No. denotes the surface finish according to:

V = White RAL 9010 G = Grey RAL 7012 SV = Black RAL 9005



(the base is an accessory)

Service poles

MP-Quattro

The Quattro pole is mounted stand alone on a base.

Double-sided aluminium pole with four compartments.

Available in white (RAL 9010) finish as standard.

Equipped as set out below or customized on request.

Contact our support department for customised service poles – offert@mpbolagen.se

Easily create a service pole:

<https://konfigurator.mpbolagen.se/>

Quattro – standard poles – select below.

U 701

2 m flexible tube Ø60 mm.

Total cable length 7.5 m - electricity/data.

U 721

2 m flexible tube Ø60 mm.

Total cable length 5 m - electricity/data.

Datakablage skärmat Cat6 S/FTP.



(the base is an accessory)

Equipped (per compartment/workplace)

Model	Genersl power	Data power	RJ45	Blind cover
U 701 V	4 sockets	4 sockets	2 pcs.	1 pcs.
U 721 V	6 sockets	–	2 pcs.	–

Model	White	E-no
Stand alone – 2100 mm	MP-U 701 V	11 790 18
Stand alone – 2100 mm	MP-U 721 V	11 782 22

The last letter in the MP No. denotes the surface finish according to:

160

V = White RAL 9010

G = Grey RAL 7012

SV = Black RAL 9005

Suspended boxes & Balance block

- see page 163.



MPbolagen

Service poles

Mobile post – MP-Duo



Standard post with four braked castors on a base plate, 4x2-way socket outlets, 5 m connection cord and two empty mounting boxes for data/media.

White	E-no
MP-U 615 V	11 790 16

Service post – MP-Duo



Ready-equipped service post for e.g. conference rooms. Equipped with 3x2-way socket outlets connected to a terminal block. HDMI and USB female socket outlets and two empty mounting boxes for data/media.

White	E-no
MP-U 616 V	11 790 19

The last letter in the MP No. denotes the surface finish according to:

162 V = White RAL 9010 G = Grey RAL 7012 SV = Black RAL 9005

Suspended post – MP-Duo

Standard box with 2x2-way socket outlets and two angled front covers (data/media). Spiral cable 0.5-3 m. Installed on wire or with balance block (sold separately).

Balance block U128 with roller blind function or U129 is used for suspended box MP-Duo, see below.



White	E-no
MP-U 610 V	11 790 15

Balance block

Balance block with roller blind function.



Weight kg	Art. no	E-no
0,5-2	MP-U 128	11 792 58

Balance block 0.5-6 kg

Stops in the required position with loads over 0.5 kg. Returned manually to its starting position.



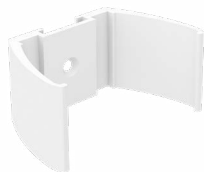
Weight kg	Art. no	E-no
0,5-6	MP-U 129	11 792 59

The last letter in the MP No. denotes the surface finish according to:

V = White RAL 9010 G = Grey RAL 7012 SV = Black RAL 9005

Service poles – service pole/post accessories

Wall bracket



Bracket for Flex profile, installed directly on the wall.

White	E-no	Black	E-no
MP-U 010 V	11 791 31	MP-U 010 SV	11 783 99

Wall/desktop bracket MP-Flex 45°



Bracket for Flex profile for installation on a wall or desktop, 45° profile angle.

White	E-no
MP-U 014 V	11 791 37

Wall bracket with spacer MP-Flex



Wall bracket for the MP-flex rod when mounted to a wall. The bracket gives a distance of 25 mm and is suitable in areas with suspended ceilings and allows the profile to go through the roof panel instead.

White	E-no	Black	E-no
MP-U 030 V	11 787 02	MP-U 030 SV	11 787 03

The last letter in the MP No. denotes the surface finish according to:

164 V = White RAL 9010 G = Grey RAL 7012 SV = Black RAL 9005

DUCTEL®

WALL SOCKETS FOR WALL TRUNKINGS



Installation ready two- and four-way outlet sockets

with data marking for prioritised power. The junction box is concealed under the front cover and features smart strain relief.



Cover for data socket outlet 2xRJ45

Space for 2xRJ45 with integrated dust cover.

MPbolagen

Service poles

Design base



Fits Flex-, Duo- and Quattro poles.
Use the enclosed bracket set for mounting on Flex and Duo poles.
Size 365x365x35 mm, weight 12.5 kg.

Grey	E-no	White	E-no	Black	E-no
MP-U 038 G	11 791 74	MP-U 038 V	11 791 75	MP-U 038 SV	11 783 94

Pole base – Flex and Duo



The base is secured with socket head cap screws, included with the pole.
Dim 325x325x20 mm, weight 8 kg.

Grey	E-no	White	E-no	Black	E-no
MP-U 040 G	11 791 20	MP-U 040 V	11 791 21	MP-U 040 SV	11 782 13

Pole base for wall



Pole base for placement close to the wall. Fits Flex and Duo poles.
Size 294x445x20 mm, weight 6.5 kg.

Grey	E-no	White	E-no	Black	E-no
MP-U 041 G	11 774 97	MP-U 041 V	11 774 98	MP-U 041 SV	11 782 14



New pole base MP-Flex and Duo poles

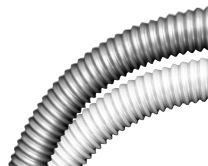
For neater installations against the wall – white, black or grey.

MPbolagen

The last letter in the MP No. denotes the surface finish according to:

Flexible tube 2 m

Tube 2 m 50- and 60 mm.



Ø	White	E-no	Black	E-no
50	MP-U 070 V	11 791 81	MP-U 070 S	11 791 78
60	MP-U 071 V	11 791 83	-	-

Tube bracket

Bracket for flexible tube 50 mm



Ø	White	E-no
50	MP-U 024 V	11 791 46

Ceiling frame for tube

Set with two frames, for quicker and easier ceiling installation.
Suitable for tubes with Ø50 and Ø60 mm.



White	E-no
MP-U 073 V	11 791 86

End plate MP-Flex

Plastic sleeve for Flex profile.



White	E-no
MP-U 022 V	11 791 55

End sleeve for tube



Mod.	White	E-no
Flex	MP-U 074 V	11 791 91
Duo	MP-U 075 V	11 791 93
Quatt.	MP-U 076 V	11 791 95

Service poles

Ceiling frame MP-Flex



Ceiling frame for Flex pole
Can be retrofitted.

White	E-no
MP-U 077 V	11 791 84

Ceiling frame MP-Flex – wall installation



Ceiling frame for wall mounted Flex profile. Can be retrofitted.

White	E-no
MP-U 080 V	11 791 85

Ceiling frame MP-Duo – downward tube



Ceiling frame for Duo poles with downward tube. Can be retrofitted.

White	E-no
MP-U 082 V	11 791 87

Ceiling frame MP-Duo – base profile



Ceiling frame for Duo profile.
Can be retrofitted.

White	E-no
MP-U 083 V	11 791 88

The last letter in the MP No. denotes
the surface finish according to:

168 V = White RAL 9010 G = Grey RAL 7012 SV = Black RAL 9005

Ceiling frame MP-Quattro – downward tube

Ceiling frame for Quattro poles with downward tube. Can be retrofitted.



White	E-no
MP-U 084 V	11 791 89

Tray bracket for tube 50-60 mm

Bracket for fastening tubes in cable trays.



mm	Suitable for	White	E-no
60	Quattro	MP-U 079 V	11 792 01

2xRJ45 Cat6 UTP

7.5 m cable assembly, Cat6 UTP incl. connector, assembly washer and front cover.



White	E-no
MP-U 131 D	11 792 10

Audio and video adapters

USB A-female to USB A 3,0 – female with Keystone jack.

HDMI adapter – female - female with Keystone jack.

PHONO adapter 3.5 mm – female - female with Keystone jack.



Adapter	White	E-no
USB 3,0 Keystone	MP-U USB	11 792 50
HDMI Keystone	MP-U HDMI	11 792 51
PHONO 3,5 Keystone	MP-U PHONO	11 792 52

The last letter in the MP No. denotes the surface finish according to:

V = White RAL 9010 G = Grey RAL 7012 SV = Black RAL 9005

Service poles

Front cover – angled



Front cover for fastening of the assembly washer, see below and page 171.

White	E-no	Black	E-no
MP-U 170 V	11 792 31	MP-U 170 SV	11 784 36

Blind washer



Fitted in data cover MP-U170, see above. Ordered separately.

White	E-no	Black	E-no
MP-U 171 V	11 792 32	MP-U 171 SV	11 784 37

Assembly washer Keystone 2xRJ45



Fitted in data cover MP-U170, see above. Ordered separately.

White	E-no	Black	E-no
MP-U 172 V	11 792 33	MP-U 172 SV	11 784 38

Assembly washer Keystone 1xRJ45



Fitted in data cover MP-U170, see above. Ordered separately.

White	E-no
MP-U 173 V	11 792 34

Assembly washer Actassi 2xRJ45



Fitted in data cover MP-U170, see above. Ordered separately.
Note! Assembly frame required for Actassi socket outlets.

White	E-no	Black	E-no
MP-U 174 V	11 792 35	MP-U 174 SV	11 784 39

The last letter in the MP No. denotes the surface finish according to:

170 V = White RAL 9010 G = Grey RAL 7012 SV = Black RAL 9005

Assembly washer Systimax 2xRJ45

Fitted in data cover MP-U170, see page 170.
Ordered separately.



White	E-no
MP-U 184 V	11 792 39

Assembly washer D-connector 9 way/VGA

Fitted in data cover MP-U170, see page 170.
Ordered separately.



White	E-no
MP-U 175 V	11 792 35

Assembly washer fiber 1 x Duplex SC

Fitted in data cover MP-U170, see page 170.
Ordered separately.



White	E-no
MP-U 176 V	11 792 37

Front cover Mosaic 45 x 45 mm

For the installation of Mosaic components in
Service poles/Posts.

Contact us for switch, charger options, etc.



White	E-no
MP-U 190 V	11 792 41

Floor boxes

COMPLETE RANGE

Contact us for quick, simple and
smart solutions!

offert@mpbolagen.se



MPbolagen