

Cable ladders –RF/SF

Stainless steel/acid resistant is a pure metal for both production and recycling.
It is also a material with a low maintenance cost.

Stainless steel EN1.4301 (SS2333/ AISI 304)

- environmental category C5-I
- Very high corrosivity.
- Areas with almost permanent air condensation and large levels of air contamination.
- Industrial areas with high humidity and aggressive atmosphere.
- Tunnels, swimming pools, shipyards, etc.

Acid-resistant EN1.4404 (SS2348/ AISI 316L) – environmental category C5-M

- Very high corrosivity.
- Areas with almost permanent moisture condensation and large levels of air contamination.
- Treatment plants and coastal and offshore areas with large amounts of salt.

The aim of MP bolagen to be a complete supplier of cable management has been expanded and as a result stainless steel/acid-resistant cable ladders are now a part of the standard range.

Selection of surface finish

Equipotential bonding

Cable ladders



Cable ladders RF/SF



Cable trays/
luminaire rails



Wire mesh trays



Profiles



MP-19" racks



Potential connection



Cable clamps



Ceiling brackets
concrete screws



Service poles/posts



Floor boxes



Wall trunkings



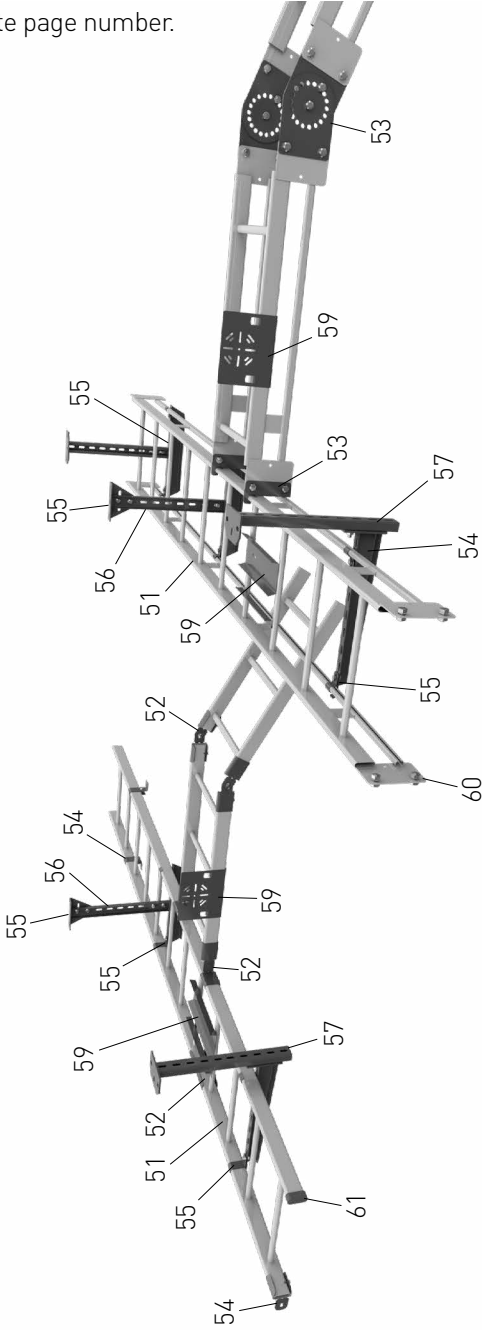
E-number, weight, package

Cable ladders

Ladder type RF and SF

Numbers denote page number.

Fastening screw
– see page 60.



Ladder type RF and SF

Numbers denote page number.

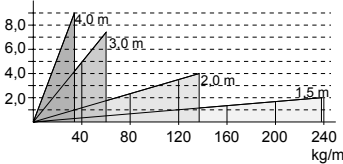
Cable ladders – stainless

Cable ladder 6 m

Stainless SS2333 / EN1.4301
 Acid resistant SS2348 / AISI 316L / EN1.4404
 Cable ladder equipped with open rungs.
 Rung spacing: c-c 300 mm.



Deflection in mm for cantilever arm
 spacing 1,5 - 4 m.
 mm



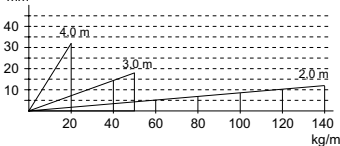
B	Stainless	E-no	Acid resist	E-no
150	6001-33	11 161 00	6001-48	11 161 01
200	6002-33	11 161 02	6002-48	11 161 03
300	6003-33	11 161 04	6003-48	11 161 05
400	6004-33	11 161 06	6004-48	11 161 07
500	6005-33	11 161 08	6005-48	11 161 09
600	6006-33	11 161 10	6006-48	11 161 11

Cable ladder 6 m

Stainless SS2333 / EN1.4301
 Acid resistant SS2348 / AISI 316L / EN1.4404
 Cable ladder equipped with open rungs.
 Rung spacing c-c 300 mm.



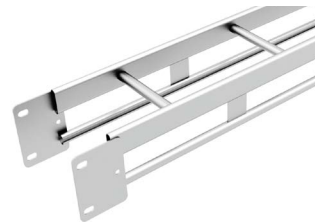
Deflection in mm for cantilever arm
 spacing 2 - 4 m.
 mm



B	Stainless	E-no	Acid resist	E-no
200	8062-33	11 163 02	8062-48	11 163 03
300	8063-33	11 163 04	8063-48	11 163 05
400	8064-33	11 163 06	8064-48	11 163 07
500	8065-33	11 163 08	8065-48	11 163 09
600	8066-33	11 163 10	8066-48	11 163 11

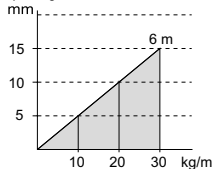
Cable ladder 6 m – reinforced

Stainless SS2333 / EN1.4301
 Acid resistant SS2348 / AISI 316L / EN1.4404
 Cable ladder equipped with open rungs.
 Rung spacing c-c 300 mm.



Fastening screw/nut: M12x25 – see page 60.

Deflection in mm for cantilever arm
 spacing 6 m.
 mm



B	Stainless	E-no	Acid resist	E-no
200	6012-33	11 161 12	6012-48	11 161 13
300	6013-33	11 161 14	6013-48	11 161 15
400	6014-33	11 161 16	6014-48	11 161 17
500	6015-33	11 161 18	6015-48	11 161 19
600	6016-33	11 161 20	6016-48	11 161 21

The number in the MP No. denotes the surface finish according to:
 [also see page 4]

33 = Stainless steel
 48 = Acid resistant

Cable ladders – RF/SF

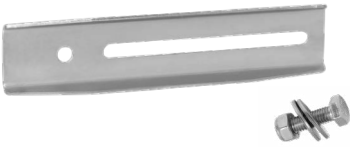
Ladder splice – internal



Resistance measurements on cable ladders in stainless steel (EN 1.4301) and acid resistant (EN1.4404) has been conducted and meets the requirements set out in IEC 61537.

Stainless	E-no	Acid resistant	E-no
6300-33	11 161 88	6300-48	11 161 89

Ladder splice – internal



Internal splice for straight splicing of cable ladders. Resistance measurements on cable ladders in stainless steel (EN 1.4301) and acid resistant (EN1.4404) has been conducted and meets the requirements set out in IEC 61537.

Stainless	E-no	Acid resistant	E-no
6657-33	11 163 12	6657-48	11 163 13
-	-	Screw 6599	11 163 14

Vertical axis



Used for vertical angling. Screws and nuts included. Resistance measurements on cable ladders in stainless steel (EN 1.4301) and acid resistant (EN1.4404) has been conducted and meets the requirements set out in IEC 61357.

Stainless	E-no	Acid resistant	E-no
6310-33	11 161 92	6310-48	11 161 93

Flat elbow



Used for horizontal tees, crosses and elbows. An elbow to the right and left is required. Screws and nut included. Resistance measurements on cable ladders in stainless steel (EN 1.4301) and acid resistant (EN1.4404) has been conducted and meets the requirements set out in IEC 61357.

	Stainless	E-no	Acid resistant	E-no
Left	6660-33	11 161 94	6660-48	11 161 95
Right	6661-33	11 161 96	6661-48	11 161 97

The number in the MP No. denotes the surface finish according to:
(also see page 4)

33 = Stainless steel
48 = Acid resistant

Cable ladders – stainless

Ladder splice – reinforced

Used for splicing cut reinforced cable ladders. Drill an 8 mm hole in the side profiles and secure the splice with the supplied screws.

Resistance measurements on cable ladders in stainless steel (EN 1.4301) and acid resistant (EN1.4404) has been conducted and meets the requirements set out in IEC 61357.



Stainless	E-no	Acid resistant	E-no
6023-33	11 163 15	6023-48	11 163 16

Junction hook

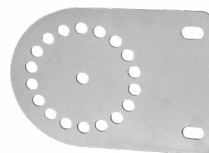
Used to connect to an existing section and creates a Tee piece. The hooks are fitted to the joint plates located on the connecting cable ladder (one hook per side on each joint plate). Two junction hooks are required as well as one screw set (11 162 92) for a complete junction. Secure to the main section by bending out the tongue and fastening with a self-tapping screw.



Stainless	E-no	Acid resistant	E-no
6029-33	11 163 21	6029-48	11 163 22

Angling – vertical

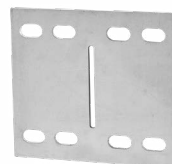
Used to create horizontal angles on stainless reinforced cable ladders. Four angles are required to create a complete joint and three sets of fastening screws 6695 (11 162 92) to fix and secure the joint plates on the ladder.



Stainless	E-no	Acid resistant	E-no
6025-33	11 163 17	6025-48	11 163 18

Angling – horizontal

Horizontal angle for reinforced stainless/acid resistant cable ladders. Used to create a junction at an optional angle and to serve as an end bracket against a wall or floor. Two angles and two screw sets 6695 (11 162 92) are required for one complete junction.



Stainless	E-no	Acid resistant	E-no
6317-33	11 163 19	6317-48	11 163 20

The number in the MP No. denotes the surface finish according to:
(also see page 4)

33 = Stainless steel
48 = Acid resistant

Cable ladders – stainless

Angle bracket



For installation with pendants/anchor rails.

Stainless	E-no	Acid resist.	E-no
6530-33	11 162 58	6530-48	11 162 59

Wall bracket



For horizontal/vertical installation of the cable ladder. Screw and nut included.

Height mm	Stainless	E-no	Acid resist.	E-no
25	6320-33	11 161 98	6320-48	11 161 99
75	6321-33	11 162 00	6321-48	11 162 01

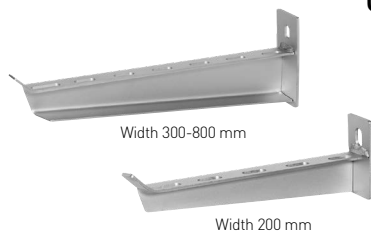
Floor and end bracket



For ending against the floor or wall. One bracket to the right and left is required.

	Stainless	E-no	Acid resist.	E-no
Vänster	6330-33	11 162 02	6330-48	11 162 03
Höger	6331-33	11 162 04	6331-48	11 162 05

Cantilever arm



Cantilever arm for cable ladder. The ladder is secured using cantilever arm clamps – see page 55. Ultimate failure load ≥ 1.7 times maximum load.

B	Max load	Stainless	E-no	Acid resist.	E-no
200	130 kg	6101-33	11 161 24	6101-48	11 161 25
300	200 kg	6102-33	11 161 26	6102-48	11 161 27
400	350 kg	6103-33	11 161 28	6103-48	11 161 29
500	380 kg	6104-33	11 161 30	6104-48	11 161 31
600	380 kg	6105-33	11 161 32	6105-48	11 161 33
800	300 kg	6107-33	11 161 34	6107-48	11 161 35

The number in the MP No. denotes the surface finish according to: (also see page 4)

33 = Stainless steel
48 = Acid resistant

Cable ladders – stainless

Cantilever arm clamp

For fastening cable ladders on cantilever arms and support yokes. Screw and nut included.



Stainless	E-no	Acid resist.	E-no
6110-33	11 161 48	6110-48	11 161 49

Cantilever arm clamp – reinforced

For fastening reinforced cable ladders on cantilever arms and support yokes. Screw and nut included.



Stainless	E-no	Acid resist.	E-no
6120-33	11 161 50	6120-48	11 161 51

Support yoke

Support yoke for centre installation of cable ladders on ceiling pendant or pendant/anchor rail.



B	Stainless	E-no	Acid resist.	E-no
150	6681-33	11 161 36	6681-48	11 161 37
200	6682-33	11 161 38	6682-48	11 161 39
300	6683-33	11 161 40	6683-48	11 161 41
400	6684-33	11 161 42	6684-48	11 161 43
500	6685-33	11 161 44	6685-48	11 161 45
600	6686-33	11 161 46	6686-48	11 161 47

Ceiling bracket

Used for pendant rail/anchor rail.



Stainless	E-no	Acid resist.	E-no
8082-33	11 162 06	8082-48	11 162 07

The number in the MP No. denotes the surface finish according to:
[also see page 4]

33 = Stainless steel
48 = Acid resistant

Cable ladders – stainless

Pendant rail



For centre pendant installation with support yoke.

L	Stainless	E-no	Acid resist.	E-no
325	8283-33	11 162 42	8283-48	11 162 43
415	8284-33	11 162 44	8284-48	11 162 45
505	8285-33	11 162 46	8285-48	11 162 47
595	8286-33	11 162 48	8286-48	11 162 49
2980	8238-33	11 162 52	8238-48	11 162 53

Anchor rail 26x47 mm – 3 m



For centre pendant installation with support yoke or installation with cantilever arm.

Stainless	E-no	Acid resist.	E-no
6520-33	11 162 54	6520-48	11 162 55

Double anchor rail 52x47 mm – 3 m



For installation with cantilever arm.

Stainless	E-no	Acid resist.	E-no
6525-33	11 162 56	6525-48	11 162 57

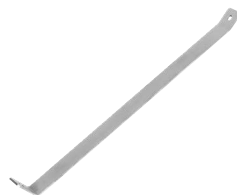
The number in the MP No. denotes the surface finish according to:
(also see page 4)

33 = Stainless steel
48 = Acid resistant

Cable ladders – stainless

Pendant stay

Used to reduce the deflection of ceiling pendants.



L	Stainless	E-no	Acid resist.	E-no
300	6430-33	11 162 34	6430-48	11 162 35
500	6431-33	11 162 36	6431-48	11 162 37
800	6432-33	11 162 38	6432-48	11 162 39
1500	6433-33	11 162 40	6433-48	11 162 41

Ceiling pendant

Used for centre pendant installation with support yoke or together with cantilever arm.

Screws – see page 60.



L	Stainless	E-no	Acid resist.	E-no
280	6400-33	11 162 10	6400-48	11 162 11
370	6401-33	11 162 12	6401-48	11 162 13
505	6402-33	11 162 14	6402-48	11 162 15
730	6403-33	11 162 16	6403-48	11 162 17
1000	6404-33	11 162 18	6404-48	11 162 19
2000	6405-33	11 162 20	6405-48	11 162 21

Ceiling pendant – double sided

For installation together with cantilever arm from the ceiling or on the floor.

Screws – see page 60.



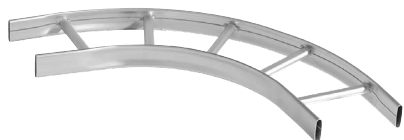
L	Stainless	E-no	Acid resist.	E-no
502	6410-33	11 162 22	6410-48	11 162 23
730	6411-33	11 162 24	6411-48	11 162 25
1000	6412-33	11 162 26	6412-48	11 162 27
1500	6413-33	11 162 28	6413-48	11 162 29
2000	6414-33	11 162 30	6414-48	11 162 31
3000	6415-33	11 162 32	6415-48	11 162 33

The number in the MP No. denotes the surface finish according to:
[also see page 4]

33 = Stainless steel
48 = Acid resistant

Cable ladders – stainless

Flat elbow



Installed on ladders with ladder splice 11 161 88- 89, see page 52.
Inner radius 268 mm.

B	Stainless	E-no	Acid resist.	E-no
200	6201-33	11 161 54	6201-48	11 161 55
300	6202-33	11 161 56	6202-48	11 161 57
400	6203-33	11 161 58	6203-48	11 161 59
500	6204-33	11 161 60	6204-48	11 161 61
600	6205-33	11 161 62	6205-48	11 161 63

Tee piece



Installed on ladders with ladder splice 11 161 88- 89, see page 52.

B	Stainless	E-no	Acid resist.	E-no
200	6231-33	11 161 66	6231-48	11 161 67
300	6232-33	11 161 68	6232-48	11 161 69
400	6233-33	11 161 70	6233-48	11 161 71
500	6234-33	11 161 72	6234-48	11 161 73
600	6235-33	11 161 74	6235-48	11 161 75

Vertical elbow



Installed on ladders with ladder splice 11 161 88- 89, see page 52.

B	Stainless	E-no	Acid resist.	E-no
200	6261-33	11 161 78	6261-48	11 161 79
300	6262-33	11 161 80	6262-48	11 161 81
400	6263-33	11 161 82	6263-48	11 161 83
500	6264-33	11 161 84	6264-48	11 161 85
600	6265-33	11 161 86	6265-48	11 161 87

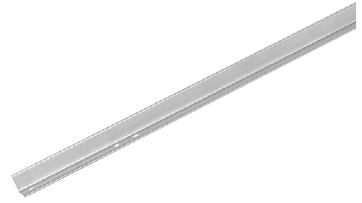
The number in the MP No. denotes the surface finish according to:
(also see page 4)

33 = Stainless steel
48 = Acid resistant

Cable ladders – stainless

Divider – 1.8 m

Divide the cable ladder into different compartments.

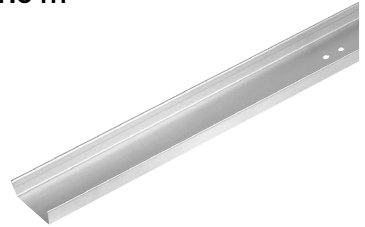


Height mm	Stainless	E-no	Acid resist.	E-no
24	6665-33	11 162 74	6665-48	11 162 75
60	6666-33	11 162 76	6666-48	11 162 77

RF/SF lead

Telecom channel – 1.8 m

Telecom channel is equipped with Ø23 mm knockouts in the bottom.



B	Stainless	E-no	Acid resist.	E-no
50	6670-33	11 162 78	6670-48	11 162 79
100	6671-33	11 162 80	6671-48	11 162 81

Mounting plate – perforated

For the installation of boxes and socket outlets, etc.



Stainless	E-no	Acid resist.	E-no
6552-33	11 162 64	6552-48	11 162 65

Luminaire plate

Installed between ladder rungs.



Stainless	E-no	Acid resist.	E-no
6541-33	11 162 60	6541-48	11 162 61

The number in the MP No. denotes the surface finish according to:
[also see page 4]

33 = Stainless steel
48 = Acid resistant

Cable ladders – stainless

Set of screw and nut M8x20/30



Set of screw and nut, for installation on pendant/anchor rail.

Dim	Acid resist.	E-no
M8x20	6690	11 162 90
M8x30	6691	11 162 91

Set of screw M12x25



For splicing reinforced cable ladders.
Set with 4 screws and nuts.

Dim	Acid resist.	E-no
M12x25	6695	11 162 92

T-screw



T-screw with nut for installation on pendant/anchor rail.

Dim	Acid resist.	E-no
M8x30	66928	11 162 93
M10x30	6692	11 162 94
M10x40	6693	11 162 95
M10x50	6694	11 162 96

Cable ladders – stainless

End protection ladder

Red coloured end protection for cable ladders. Fitted internally and externally on the ladder ends.



RF/SF load

Fits	Plastic	E-no
Internal	6901-10	11 162 98
External	6900-10	11 162 97

End protection anchor rail/ceiling pendant

Red coloured end protection that fits single and double anchor rails/ceiling pendants.



Fits	Plastic	E-no
Single	6910-10	11 162 99
Double	6911-10	11 163 00

The number in the MP No. denotes the surface finish according to:
[also see page 4]

33 = Stainless steel
48 = Acid resistant

Cable ladders – stainless

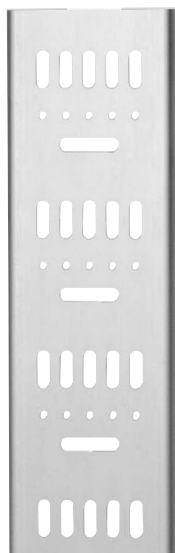
Strapping profile – 2.5 m



For tying cable on the wall. Width: 30 mm.

Stainless	E-no	Acid resist.	E-no
800-33	11 160 17	800-48	11 160 18

Mounting profile - 2 m



Perforated mounting profile with holes for clamping cables.

B	Stainless	E-no	Acid resist.	E-no
88	6675-33	11 162 82	6675-48	11 162 83
123	6676-33	11 162 84	6676-48	11 162 85

The number in the MP No. denotes the surface finish according to:
(also see page 4)

33 = Stainless steel
48 = Acid resistant