

## Metal roof bracket

Metal roof bracket providing a unique opportunity to mount in sheet metal. The bracket is adjustable for different widths between troughs. It can be used for flat metal roofs and wall mounting. Fastened using sheet metal screws or pop rivets on trough's upended - strongest part of the sheet metal.

The metal roof bracket can be used with or without MP profiles. All the construction industry's installation groups are given a unique opportunity, thanks to flexibility of the bracket.

Selection of surface finish

Equipotential bonding

Cable ladders



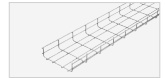
Cable ladders RF/SF



Cable trays/luminaire rails



Wire mesh trays



Profiles



MP-19" racks



Potential connection



Cable clamps



**Ceiling brackets  
concrete screws**



Service poles/posts



Floor boxes



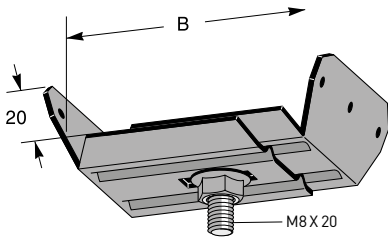
Wall trunkings



E-number, weight, package

# Metal roof bracket

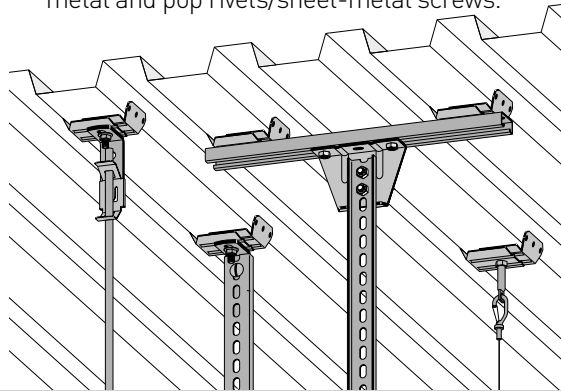
## Universal bracket for trapezoidal sheet-metal



Bracket for trapezoidal sheet-metal suitable for trough bottom width B. When divided and in combination with a flat bar the anchor is suitable for all trough bottoms. The angle bracket has three holes  $\varnothing$  4.3 mm, designed for 4 mm pop rivets or sheet metal screws ST4.2 (B8).

Maximum load 125 kg, ultimate failure load  $\geq 1.7$  times the maximum load.

In order to obtain the bracket's maximum load, consult the supplier's load values for roofing metal and pop rivets/sheet-metal screws.

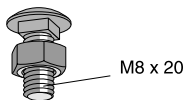


B	Zinc 20 $\mu$ m	E-no	Zinc 60 $\mu$ m	E-no	White	E-no
40 - 60	MP-980 S	15 094 52	MP-980 Z	15 094 54	MP-980 V	15 094 53
60 - 95	MP-981 S	15 094 56	MP-981 Z	15 094 55	MP-981 V	15 094 57
95 - 150	MP-982 S	15 094 50	MP-982 Z	15 094 49	MP-982 V	15 094 51

## Bolt and nut

When Universal bracket MP-980 and MP-982 are installed divided, the bracket should be supplemented with 1 bolt and nut MP 990 per bracket.

10 per set (package).



Zinc 10 $\mu$ m	E-no
MP-990 E	15 094 58

## Concrete screw Multi-Monti

Multi-Monti is a concept with innovative and smart concrete screws. We have included the range as they naturally complement our other products.

### Some of the advantages offered by Multi-Monti:

- Small drill holes, a 7.5 mm screw requires a  $\varnothing$  6 mm drill hole, this corresponds to an M8 expander bolt with a  $\varnothing$  8 mm drill hole. The same pull-out force is obtained at a set depth of 35 mm.
- Saw teeth, the screw tips are equipped with saw teeth. The screws "tap" into the substrate, thus there is no expansion pressure and you can anchor closer to the edges. Also ideal in bricks, which is normally difficult to attach anchor in.
- Type approval signifies that you can always rely on the screw quality.
- Removable, the screw can be removed simply by unscrewing it.
- Reusable, dismantled screws can be used again.

The above added value gives a time benefit of up to 50% per fastening.

Selection of surface finish

Equipotential bonding

Cable ladders



Cable ladders RF/SF



Cable trays/luminaires rails



Wire mesh trays



Profiles



MP-19" racks



Potential connection



Cable clamps



## Ceiling brackets concrete screws



Service poles/posts



Floor boxes



Wall trunkings



E-number, weight, package

# Concrete screw

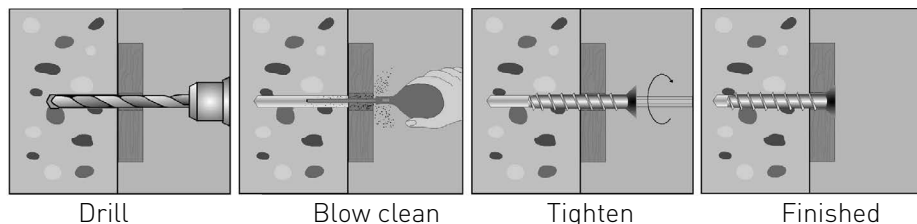
## Multi-Monti concrete screws

Multi-Monti is a concept with innovative and smart concrete screws, which naturally complement our other products.

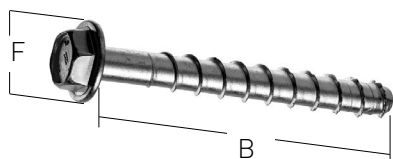
The following max. loads apply for uncracked concrete K 25 with safety factor 3. For concrete F 20 calculate 75% of the maximum loads.

Screw-size	Max tensile load	Max axial load	Drill-hole	Drill-depth	Min edge distance	Spanner-size
Ø7,5x50	2,7 kN	2,7 kN	6	55	70	10
Ø7,5x55	2,7 kN	4,0 kN	6	65	80	10
Ø7,5x70	5,9 kN	5,9 kN	6	80	120	10
Ø10x70	6,1 kN	6,1 kN	8	80	120	13

### Install like this



## Concrete screw with flange



B	F	Pack.	Zinc 10 µm	E-no	Zinc 60 µm	E-no
7,5 x 50	17,5	100 pcs.	MP-890 E	15 566 20	MP-890 Z	15 566 21
7,5 x 70	17,5	50 pcs.	MP-891 E	15 566 22	MP-891 Z	15 566 23
10 x 70	19,0	50 pcs.	MP-892 E	15 566 24	MP-892 Z	15 566 25

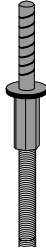
The letter in the MP No. denotes the surface finish according to: (also see page 4)

E = Electrogalv. 10 µm  
S = Zinc 20 µm  
Z = Zinc SS-EN ISO1461

A = Aluzinc 20 µm (AZ 150)  
Z4 = Zinc/mag. 25 µm (ZM 310)  
R = Acid resist.

## Ceiling bracket for threaded rod

Concrete screw, screwed directly into the substrate. Threaded rod screwed into the sleeve "nut hole". Both M10 and M8 rod can be threaded into the bracket. Spanner size: 13 mm.



B	Pack.	Zinc 10 µm	E-no
7,5x55	40 pcs.	MP-023 E	11 175 50

## Lightweight concrete screw 8x100 mm

Screw for installation in lightweight concrete. Yellow chromated with round head, Torx TX 40. Supplied with washer Ø18 mm. Screwed directly into lightweight concrete, Leca blocks or the like without pre-drilling. Pull-out value > 2 kN.

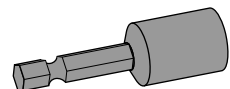


10 per package.

Zinc 10 µm	E-no
MP-889 E10	15 566 36

## Magnetic socket for 10/13 mm

Magnetic socket made of carbon steel with 1/4" shaft for drills and screwdrivers.



Sleeve	Suitable for	Zinc 10 µm	E-no
10 mm	15 566 20-23	MP-895 E	16 147 60
13 mm	15 566 24-25, 11 175 50	MP-896 E	16 147 61

The letter in the MP No. denotes the surface finish according to: (also see page 4)

V = White  
 B = Beige NCS 2502-Y  
 SV = Black RAL 9005



# Service poles & posts

The service poles/post make up the final distribution point to the user.

Our aim is to develop different components for the industry's most functional and integrated systems.

Contact us if you like quick smart solutions!

## Design your own service pole!

[konfigurator.mpbolagen.se](http://konfigurator.mpbolagen.se)

**MP**bolagen