

Wall trunkings

Ductel

Trunking system for electricity, tele-coms and data solutions.

The trunking is made of aluminium and is available with 45 mm and 80 mm openings.

For simplicity all trunking has installation holes.

Selection of surface finish

Equipotential bonding

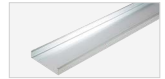
Cable ladders



Cable ladders RF/SF



Cable trays/lumin-
aire rails



Wire mesh trays



Profiles



MP-19" racks



Potential connection



Cable clamps



Ceiling brackets
concrete screws



Service poles/posts



Floor boxes



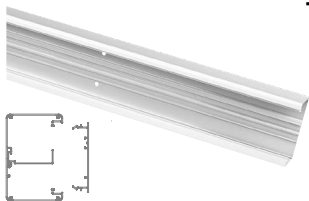
Wall trunkings



E-number, weight, package

Wall trunkings

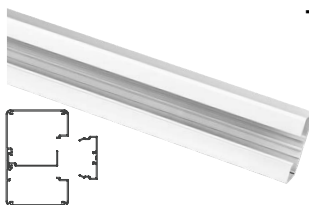
Trunking TB 1010 – 3 m



The cable area can be divided into sections with an intermediate shelf and there are slots in the trunking for earthing clamp TBM 1 - see page 192. This trunking cannot be installed with the cantilever arm. Perforated back.

Model	E-no	Width/depth	Surface finish	Suitable cover (80 mm)
TB 1010-1	11 793 50	100x65 mm	natural anod.	11 793 72
TB 1010-2	11 782 23	100x65 mm	black painted	11 782 29
TB 1010-3	11 793 51	100x65 mm	white painted	11 793 73

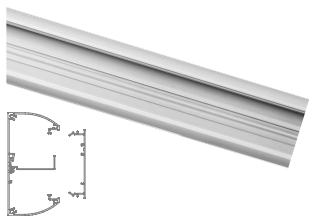
Trunking TB 1040 – 3 m



The cable area can be divided into sections with an intermediate shelf and there are slots in the trunking for earthing clamp TBM 1 - see page 190. This trunking cannot be installed with the cantilever arm. Perforated back.

Model	E-no	Width/depth	Surface finish	Suitable cover (45 mm)
TB 1040-1	11 793 52	100x65 mm	natural anod.	11 793 70
TB 1040-3	11 793 53	100x65 mm	white painted	11 793 71

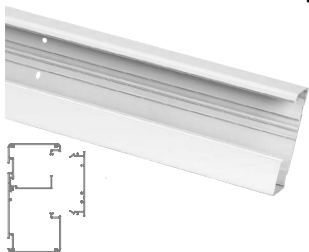
Trunking TB 1210 – 3 m



The cable area can be divided into sections with an intermediate shelf and there are slots in the trunking for earthing clamp TBM 1 - see page 190. This trunking cannot be installed with the cantilever arm. Perforated back.

Model	E-no	Width/depth	Surface finish	Suitable cover (80 mm)
TB 1210 -3	11 788 90	120x65 mm	white painted	11 793 73

Trunking TB 1310 – 3 m



The cable area can be divided into sections with an intermediate shelf and there are slots in the trunking for earthing clamp TBM 1 - see page 190. Perforated back.

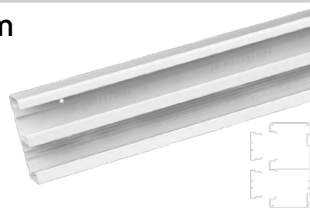
Model	E-no	Width/depth	Surface finish	Suitable cover (80 mm)
TB 1310-1	11 793 54	135x65 mm	natural anod.	11 793 72
TB 1310-2	11 782 24	135x65 mm	black painted	11 782 29
TB 1310-3	11 793 55	135x65 mm	white painted	11 793 73

Wall trunkings

Trunking TB 1340 – 3 m

The partition wall has a punched hole pattern of 50x21 mm c-c spacing 320 mm.

There are slots in the trunking for earthing clamp TBM 1 - see page 190. Perforated back.



Model	E-no	Width/depth	Surface finish	Suitable cover (45 mm)
TB 1340-1	11 793 56	135x65 mm	natural anod.	11 793 70
TB 1340-3	11 793 57	135x65 mm	white painted	11 793 71

Trunking TB 1710 – 3 m

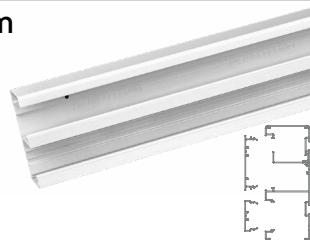
The cable area can be divided into sections with an intermediate shelf and there are slots in the trunking for earthing clamp TBM 1 - see page 190. Perforated back.



Model	E-no	Width/depth	Surface finish	Suitable cover (80 mm)
TB 1710-1	11 793 58	170x65 mm	natural anod.	11 793 72
TB 1710-2	11 782 25	170x65 mm	black painted	11 782 29
TB 1710-3	11 793 59	170x65 mm	white painted	11 793 73

Trunking TB 1740 – 3 m

The trunking can be mounted on cantilever arms. The partition wall has a punched hole pattern of 50x21 mm c-c spacing 320 mm. (Intermediate shelf can be fitted). There are slots in the trunking for earthing clamp TBM 1 - see page 190. Perforated back.

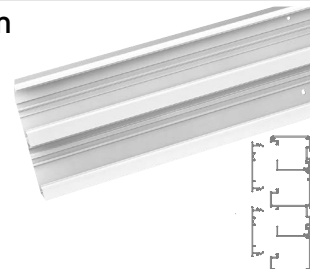


Model	E-no	Width/depth	Surface finish	Suitable cover (45/80 mm)
TB 1740-1	11 793 60	170x65 mm	natural anod.	11 793 70 - 11 793 72
TB 1740-2	11 782 27	170x65 mm	black painted	11 782 28 - 11 782 29
TB 1740-3	11 793 61	170x65 mm	white painted	11 793 71 - 11 793 73

Trunking TB 2210 – 3 m

Both compartments can be divided into several parts with TDH intermediate shelf and there are slots in the trunking for earthing clamp TBM 1 - see page 190.

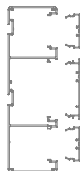
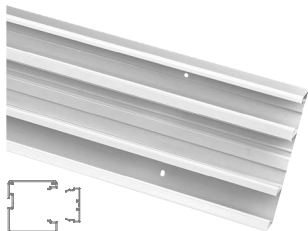
The partition wall has a punched hole pattern of 50x21 mm c-c spacing 320 mm. Perforated back.



Model	E-no	Width/depth	Surface finish	Suitable cover (80 mm)
TB 2210-1	11 793 62	220x65 mm	natural anod.	11 793 72
TB 2210-3	11 793 63	220x65 mm	white painted	11 793 73

Wall trunkings

Trunking TB 2240 – 3 m



The partition walls have a punched hole pattern of 50x 21 mm c-c spacing 320 mm.

There are slots in the trunking for earthing clamp TBM 1 – see page 190.

Perforated back.

Model	E-no	Width/depth	Surface finish	Suitable cover (45/80 mm)
TB 2240-1	11 793 64	220x65 mm	natural anod.	11 793 70 – 11 793 72
TB 2240-3	11 793 65	220x65 mm	white painted	11 793 71 – 11 793 73

Recessed installation

STYLISH AND
DISCREET

TB 1332-3

E-no: 11 788 64

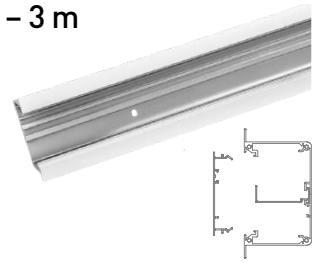


MPbolagen
www.mpbolagen.se

Wall trunkings – recessed

Recessed trunking TB 1032 – 3 m

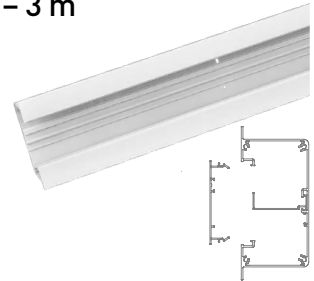
The cable area can be divided into sections with an intermediate shelf and there are slots in the trunking for earthing clamp TBM 1 - see page 190. This trunking cannot be installed with the cantilever arm. Inset depth: 100x65 mm. Perforated back.



Model	E-no	Width/depth	Surface finish	Suitable cover (80 mm)
TB 1032-3	11 788 62	125x65 mm	white painted	11 793 73

Recessed trunking TB 1332 – 3 m

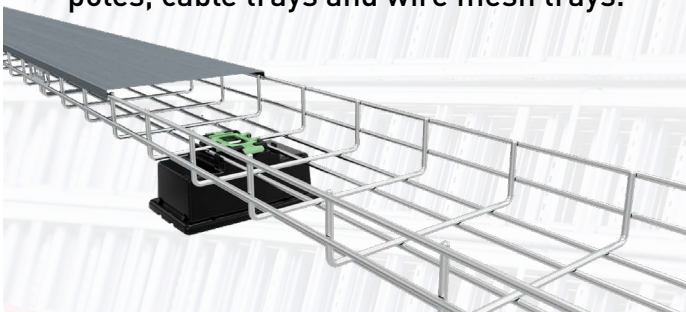
The cable area can be divided into sections with an intermediate shelf and there are slots in the trunking for earthing clamp TBM 1 - see page 190. This trunking cannot be installed with the cantilever arm. Inset depth: 100x65 mm. Perforated back.



Model	E-no	Width/depth	Surface finish	Suitable cover (80 mm)
TB 1332-3	11 788 64	148x65 mm	white painted	11 793 73

Configure more!

Our configurator now has more possibilities to calculate the quantity of cable ladders, wall trunkings, service poles, cable trays and wire mesh trays.



Configurator

MPbolagen

Wall trunkings

Front TB 80 – 3 m

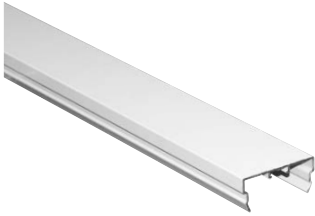


The front is fitted via a simple snap-in action.
Earthing clamp – see page 190.

Front section L = 50 mm (11 793 98-99),
used between mounting boxes. 6 pcs/pack.

Model	E-no	Width/depth	Surface finish
TB 80-1	11 793 72	80x19 mm	natural anod.
TB 80-2	11 782 29	80x19 mm	black painted
TB 80-3	11 793 73	80x19 mm	white painted
TB 80-1/50	11 793 98	80x19 mm	natural anod.
TB 80-3/50	11 793 99	80x19 mm	white painted

Front TB 45 – 3 m



The front is fitted via a simple snap-in action.

Earthing clamp – see page 190.

Model	E-no	Width/depth	Surface finish
TB 45-1	11 793 70	45x19 mm	natural anod.
TB 45-2	11 782 28	45x19 mm	black painted
TB 45-3	11 793 71	45x19 mm	white painted

Corner TBC



The corner acts as both inner and outer corners and also permits a few degrees of deviation from a 90° angle.

Model	E-no	W x D x L mm	Colour/material	Suitable for
TBC 100-1	11 793 80	90x90x103	natural alu/plastic	TB 1010, 1040
TBC 100-2	11 782 30	90x90x103	black colour alu/plastic	TB 1010, 1040
TBC 100-3	11 793 84	90x90x103	white colour alu/plastic	TB 1010, 1040
TBC 135-1	11 793 81	90x90x138	natural alu/plastic	TB 1310, 1340
TBC 135-2	11 782 33	90x90x138	black colour alu/plastic	TB 1310, 1340
TBC 135-3	11 793 85	90x90x138	white colour alu/plastic	TB 1310, 1340
TBC 170-1	11 793 82	90x90x173	natural alu/plastic	TB 1710, 1740
TBC 170-2	11 782 34	90x90x173	black colour alu/plastic	TB 1710, 1740
TBC 170-3	11 793 86	90x90x173	white colour alu/plastic	TB 1710, 1740
TBC 220-1	11 793 83	90x90x223	natural alu/plastic	TB 2210, 2240
TBC 220-3	11 793 87	90x90x223	white colour alu/plastic	TB 2210, 2240

Wall collar TBO

Wall collar of white plastic (ABS). Covers the entry hole for connection against the wall. There is a guide slot for opening and assembly, after the trunking has been installed.



Model	E-no	W x D x L mm	Material	Suitable for
TBO 100-3	11 787 17	151x106x25	ABS white	TB 1010, 1040
TBO 135-3	11 787 30	186x106x25	ABS white	TB 1310, 1340
TBO 170-3	11 787 50	221x106x25	ABS white	TB 1710, 1740
TBO 220-3	11 787 70	271x106x25	ABS white	TB 2210, 2240

Ceiling frame TBCF

Ceiling frame for trunking TB1210-3. Screws for fastening included. Can be retrofitted.



Model	E-no	W x D x L mm	Suitable for
TBCF 120-3	11 788 94	100x190x2	white finish

Jointing collar TBL

Plastic jointing collar (ABS), for connections between downward trunking and wall trunking.



Model	E-no	W x D x L mm	Material	Suitable for
TBL 10-1	11 793 76	105x67x12	ABS grey	TB 1010, 1040
TBL 10-2	11 782 36	105x67x12	ABS black	TB 1010, 1040
TBL 10-3	11 788 50	105x67x12	ABS white	TB 1010, 1040
TBL 13-1	11 793 77	140x67x12	ABS grey	TB 1310, 1340
TBL 13-2	11 782 37	140x67x12	ABS black	TB 1310, 1340
TBL 13-3	11 788 51	140x67x12	ABS white	TB 1310, 1340
TBL 17-1	11 793 78	175x67x12	ABS grey	TB 1710, 1740
TBL 17-2	11 782 38	175x67x12	ABS black	TB 1710, 1740
TBL 17-3	11 788 52	175x67x12	ABS white	TB 1710, 1740
TBL 22-1	11 793 79	225x67x12	ABS grey	TB 2210, 2240
TBL 22-3	11 788 53	225x67x12	ABS white	TB 2210, 2240

Wall trunkings

End plate TBP



End plate for stylish trunking capping. Easy installation with snap-on coupling that provides firm locking.

Note! TBP-120-3 is screwed in the trunking with the supplied screws.

Model	E-no	W x L x D mm	Surface finish	Suitable for
TBP 100-1	11 793 88	100x65x24	natural	TB 1010, 1040
TBP 100-2	11 782 44	100x65x24	black finish	TB 1010
TBP 100-3	11 793 89	100x65x24	white finish	TB 1010, 1040
TBP 120-3	11 788 92	120x60x24	white finish	TB 1210
TBP 135-1	11 793 90	135x65x24	natural	TB 1310, 1340
TBP 135-2	11 782 45	135x65x24	black finish	TB 1310
TBP 135-3	11 793 91	135x65x24	white finish	TB 1310, 1340
TBP 170-1	11 793 92	170x65x24	natural	TB 1710, 1740
TBP 170-2	11 782 47	170x65x24	black finish	TB 1740
TBP 170-3	11 793 93	170x65x24	white finish	TB 1710, 1740
TBP 220-1	11 793 94	220x65x24	natural	TB 2210, 2240
TBP 220-3	11 793 95	220x65x24	white finish	TB 2210, 2240

End plate TBP – recessed trunking



White end plate for trunking TB1032-3 and TB1332-3. Overlaps the wall by 12.5 mm.

Screwed in the trunking before installation with the supplied screws.

Model	E-no	Width/depth	Surface finish
TBP 1032-3	11 788 88	125x65x25 mm	white finish
TBP 1332-3	11 788 89	148x70x25 mm	white finish

Splice TBJ

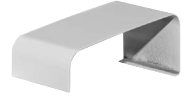


Splice for a natural joint between trunking sections. Use two splices per joint. Meets requirements for equipotential bonding according SS-EN 61537:2007.

Model	E-no	WxLxD mm	Material
TBJ 1	11 793 96	53x12x70	aluminum

Cover joint TBMP

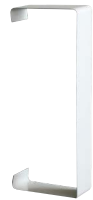
Available in four models and can be used to cover joints between trunking. Fitted using double sided adhesive tape (enclosed).



Model	E-no	Surface finish	Suitable for
TBMP 1-1	11 793 22	natural	TB-1010, 1040
TBMP 1-3	11 793 23	white finish	TB-1010, 1040
TBMP 2-1	11 793 26	natural	TB-1310, 2210, 2240
TBMP 2-3	11 793 29	white finish	TB-1310, 2210, 2240
TBMP 3-1	11 793 32	natural	TB-1340, 1740
TBMP 3-3	11 793 33	white finish	TB-1340, 1740
TBMP 4-1	11 793 36	natural	TB-1710
TBMP 4-3	11 793 37	white finish	TB-1710

Décor splice TBMP

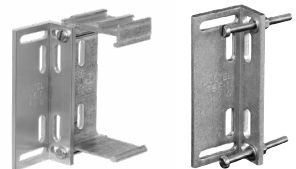
Fitted over joints as well as a wall collar for ends against the wall.



Model	E-no	Surface finish	Suitable for
TBMP 6-1	11 788 80	grey finish	TB-1010, 1040 (100 mm)
TBMP 6-2	11 782 39	black finish	TB-1010, 1040 (100 mm)
TBMP 6-3	11 788 81	white finish	TB-1010, 1040 (100 mm)
TBMP 7-1	11 788 82	grey finish	TB-1310, 1340 (135 mm)
TBMP 7-2	11 782 42	black finish	TB-1310, 1340 (135 mm)
TBMP 7-3	11 788 83	white finish	TB-1310, 1340 (135 mm)
TBMP 8-1	11 782 43	black finish	TB-1710, 1740 (170 mm)
TBMP 8-2	11 788 84	grey finish	TB-1710, 1740 (170 mm)
TBMP 8-3	11 788 85	white finish	TB-1710, 1740 (170 mm)
TBMP 9-1	11 788 86	grey finish	TB-2210, 2240 (220 mm)
TBMP 9-3	11 788 87	white finish	TB-2210, 2240 (220 mm)

Adjusting piece TBE

Used together with cantilever arms, for adjustment 0-26 mm. Can be mounting in two ways to give different mounting depths. With the long side against the wall, the measurement will be 0-11 mm. With the short side against the wall, the measurement will be 0-26 mm.



Model	E-no	Material
TBE 1	11 788 10	aluminum

Wall trunkings

Cantilever arm TBE



Aluminum cantilever arm for mounting on the wall with snap-in function.

The distance from the centre of the top hole to the top edge of the trunking is 50 mm.

Recommended spacing between cantilever arm is 1 m.

Grille and holder – see page 191.

Model	E-no	Dist.fr.wall	No. of grilles
TBE 25	11 788 05	25 mm	1
TBE 50	11 788 06	50 mm	2
TBE 75	11 788 07	75 mm	3
TBE 100	11 788 08	100 mm	4
TBE 125	11 788 09	125 mm	5

Intermediate shelf TDH – 1 m



Available in two models and used to divide the trunking into sections.

Model	E-no	Width/depth	Material
TDH 1	11 788 14	52x15 mm	aluminum
TDH 2	11 788 15	52x42 mm	aluminum

Earthing clamp TBM



The earthing clamp is used to earth the front and trunking. A maximum of 2 x 4 mm² Cu conductors can be connected to the clamp.

Model	E-no	Material
TBM 1	11 788 22	steel

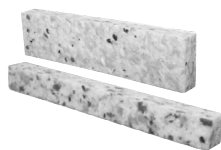
Cable tie bracket TBK



Used to secure and strain relieve cables (max. 5 mm cable ties). Can also be used for mini trunking: TBA 10 and TBA 18.

Model	E-no	Material
TBK 1	11 787 99	ABS white

Sound absorber XTBO



Sound absorber at wall penetrations by the trunking. Self-adhesive pieces which are attached to the inside of the fronts.

Model	E-no	W x L x D mm	Suitable for
XTBO 304	11 788 23	32x300x30	TB 45
XTBO 308	11 788 24	74x300x30	TB 80

Universal box TBF

Universal boxes snap into the trunking's front opening. 2 strain relief TBF 11 supplied.



Model	E-no	W x L x D mm	Material
TBF 1	11 788 42	79x42,5x79	ABS blue
TBF 2	11 788 43	79x42,5x150	ABS blue
TBF 11	11 788 47	Strain relief	-

Ventilation grille TBE – 3 m

Clipped into the ventilation grille holder TBE 3. The edge of the grille aligns with the upper edge of the trunking.



Number of grilles/cantilever arm

Cantilever arm	Grille
TBE 25.....	1
TBE 50.....	2
TBE 75.....	3
TBE 100.....	4
TBE 125.....	5

Model	E-no	Width/depth	Surface finish
TBE 20-1	11 788 18	24x9 mm	natural
TBE 20-2	11 782 35	24x9 mm	black finish
TBE 20-3	11 788 19	24x9 mm	white finish

Ventilation grille holder

The holder slides into the cantilever arm from the side.



Use of the holder

Cantilever arm	cs./cantilever arm
TBE 25.....	1/3
TBE 50.....	2/3
TBE 75.....	1
TBE 100.....	1 1/3
TBE 125.....	1 2/3

Model	E-no	Width/depth	Material
TBE 3	11 788 21	73x40 mm	ABS white

Connecting pin for grilles

Used for splicing ventilation grille TBE 20.



Model	E-no	Width/depth	Material
TBJ 10	11 788 25	50x10 mm	plastic

Wall trunkings – mini trunking

TBA 202 trunking and front – 3 m



Trunking dimensions: 32x20.5x3000 mm.
Front dimensions: 32x6x3000 mm.
Perforated back.

Model	E-no	Surface finish
Trunking TBA 202-1	11 788 55	natural anod.
Trunking TBA 202-3	11 788 56	white painted
Front TBA 22-1	11 788 65	natural anod.
Front TBA 22-3	11 788 66	white painted
End plate TBD 20-3	-	white painted.



TBA 302 trunking, front and end piece - 3 m



Trunking dimensions: 65x30x3000 mm.
Front dimensions: 54x7.5x3000 mm.
End plate: 65x30 mm.
Perforated back.

Model	E-no	Surface finish
Trunking TBA 302-1	11 788 57	natural anod.
Trunking TBA 302-3	11 788 58	white painted
Front TBA 32-1	11 788 67	natural anod.
Front TBA 32-3	11 788 68	white painted
End plate TBD 30-1	11 788 70	natural anod.
End plate TBD 30-3	11 788 71	white painted

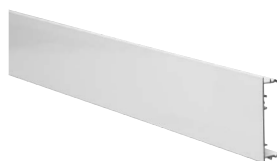


TBA 652 trunking, front and end piece – 3 m



Trunking dimensions: 65x65x3000 mm.
Front dimensions: 54x7.5x3000 mm.
End plate: 65x65 mm.
Perforated back.

Model	E-no	Surface finish
Trunking TBA 652-1	11 788 59	natural anod.
Trunking TBA 652-3	11 788 60	white painted
Front TBA 32-1	11 788 67	natural anod.
Front TBA 32-3	11 788 68	white painted
End plate TBD 65-1	11 788 72	natural anod.
End plate TBD 65-3	11 788 73	white painted



Wall trunkings – mini trunking

TBA 10 trunking, front and end piece – 3 m

Trunking dimensions: 100x49x3000 mm.

Front dimensions: 80x19x3000 mm.

End plate: 100x49 mm.

Perforated back.



Model	E-no	Surface finish
Trunking TBA 10-1	11 787 90	natural anod.
Trunking TBA 10-3	11 787 91	white painted
Front TB 80-1	11 793 72	natural anod.
Front TB 80-3	11 793 73	white painted.
End plate TBD 100-1	11 787 92	natural anod.
End plate TBD 100-3	11 787 93	white painted.

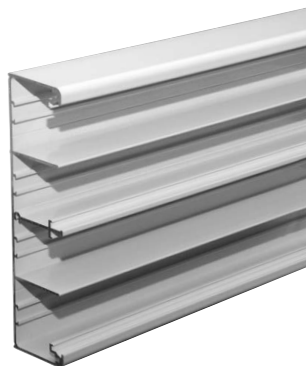
TBA 18 trunking, front and end piece – 3 m

Trunking dimensions: 100x49x3000 mm.

Front dimensions: 80x19x3000 mm.

End plate: 100x49 mm.

Perforated back.



Model	E-no	Surface finish
Trunking TBA 18-1	11 787 95	natural anod.
Trunking TBA 18-3	11 787 96	white painted
Front TB 80-1	11 793 72	natural anod.
Front TB 80-3	11 793 73	white painted
End plate TBD 180-1	11 787 97	natural anod.
End plate TBD 180-3	11 787 98	white painted

- Wall trunkings - telecom/data

Cover for data socket outlet 2xRJ45

Cover with label holder and dust cover. Fits trunking with 80 mm opening.



Model	E-no	Pack.	Type	Colour
DUCT-Key-1	11 792 78	1/4	Keystone	grey
DUCT-Key-2	11 782 51	1/4	Keystone	black
DUCT-Key-3	11 792 82	1/4	Keystone	white
DUCT-Amp-1	11 792 79	1/4	Amp	grey
DUCT-Amp-3	11 792 83	1/4	Amp	white
DUCT-Sys-1	11 792 80	1/4	Systemax	grey
DUCT-Sys-3	11 792 84	1/4	Systemax	white
DUCT-Act-1	11 792 81	1/4	Actassi	grey
DUCT-Act-3	11 782 50	1/4	Actassi	black
DUCT-Act-3	11 792 85	1/4	Actassi	white

Fastening frame for modular socket outlets with label holder

Used with adapter plates for AMP, Keystone, Systemax and Actassi data jacks. Intended for 2xRJ45 (possibility for 3xRJ45). Blind plug AUDMP33 suitable for unused holes.



Model	E-no	Designation	Pack.
AUD50.NP	11 746 46	Fastening frame for RJ45, white	10/100
AUDMP33	11 746 47	Blind plug for AUD50.NP.	10 pcs.

Adapter plate for fastening frame

Adapter plate for 3xAMP, Keystone, Systemax or Actassi data jacks. Supplemented with fastening frames AUD50.NP or AUD50.NP-83.



Model	E-no	Designation	Pack.
AUD51.1	11 746 42	Adapter plate for 3xRJ-45, AMP	10/100
AUD51.2	11 746 44	Adapter plate for 3xRJ-45, Keystone	10/100
AUD51.3	11 746 43	Adapter plate for 3xRJ-45, Systemax	10/100
AUD51.4	11 746 45	Adapter plate for 3xRJ-45, Actassi	10/100

Audio and video adapters

USB A-female to USB A 3,0 – female with Keystone jack.

HDMI adapter – female - female with Keystone jack.

PHONO adapter 3.5 mm – female - female with Keystone jack.



Adapter	White	E-no
USB 3,0 Keystone	MP-U USB	11 792 50
HDMI Keystone	MP-U HDMI	11 792 51
PHONO 3,5 Keystone	MP-U PHONO	11 792 52

Wall trunkings – Ductel, pre-wired socket outlets

Pre-wired 2-way socket outlet



Installation-ready 2-way socket outlet with label holder. Concealed junction box with strain relief and three quick connections. Approved for 3-phase through wiring.

Model	E-no	Designation	Pack.
DUCT-2-1	11 792 70	Socket outlet set, earthed, 2-way, grey	1/20
DUCT-2D-1	11 792 74	Socket outlet set, earthed, 2-way, DATA marking, grey	1/20
DUCT-2-2	11 782 48	Socket outlet set, earthed, 2-way, black	1/20
DUCT-2-3	11 792 71	Socket outlet set, earthed, 2-way, white	1/20
DUCT-2D-3	11 792 75	Socket outlet set, earthed, 2-way, DATA-labelled, white	1/20

Pre-wired 4-way socket outlet



Installation-ready 4-way socket outlet with label holder. Concealed junction box with strain relief and three quick connections. Approved for 3-phase through wiring.

Model	E-no	Designation	Pack.
DUCT-4-1	11 792 72	Socket outlet set, earthed, 4-way, grey	1/18
DUCT-4D-1	11 792 76	Socket outlet set, earthed, 4-way, DATA marking, grey	1/18
DUCT-4-2	11 782 49	Socket outlet set, earthed, 4-way, black	1/18
DUCT-4-3	11 792 73	Socket outlet set, earthed, 4-way, white	1/18
DUCT-4D-3	11 792 77	Socket outlet set, earthed, 4-way, DATA-labelled, white	1/18

Pre-wired 2-way socket outlet – Ensto Net



Installation-ready 2-way socket outlet with label holder. Concealed junction box with three-way Ensto Net connector.

Model	E-no	Designation	Pack.
DUCT-2E-3	11 792 86	Socket outlet set, earthed, 2-way, white	1/20
DUCT-2ED-3	11 792 88	Socket outlet set, earthed, 2-way, DATA-labelled, white	1/20

Pre-wired 4-way socket outlet – Ensto Net



Installation-ready 4-way socket outlet with label holder. Concealed junction box with three-way Ensto Net connector.

Model	E-no	Designation	Pack.
DUCT-4E-3	11 792 87	Socket outlet set, earthed, 4-way, white	1/18
DUCT-4ED-3	11 792 89	Socket outlet set, earthed, 4-way, DATA-labelled, white	1/18

Wall trunkings – ProDuct wall socket

Pre-wired 2-way socket outlet

Installation-ready 2-way socket outlet with label holder 14x46 mm, end piece, cover, junction box with strain relief and 3 top clips. Approved for 3-phase through wiring.



Model	E-no	Designation	Pack.
AUD11-214	11 745 77	Socket outlet set, earthed, 2-way, white	1/25
AUD11-214D	11 745 78	Socket outlet set, earthed, 2-way, DATA-labelled, white	1/25

Pre-wired 4-way socket outlet

Installation-ready 4-way socket outlet with label holder 14x46 mm, end piece, cover, junction box with strain relief and 3 top clips. Approved for 3-phase through wiring.



Model	E-no	Designation	Pack.
AUD12-214	11 745 85	Socket outlet set, earthed, 4-way, white	1/20
AUD12-214D	11 745 86	Socket outlet set, earthed, 4-way, DATA-labelled, white	1/20

Pre-wired 6-way socket outlet

Installation-ready 6-way socket outlet with label holder 14x46 mm, end piece, cover, junction box with strain relief and 3 top clips. Approved for 3-phase through wiring.



Model	E-no	Designation	Pack.
AUD13-214	11 745 89	Socket outlet set, earthed, 6-way, white	1/25
AUD13-214D	11 745 90	Socket outlet set, earthed, 6-way, DATA-labelled, white	1/25

Pre-wired 8-way socket outlet

Installation-ready 8-way socket outlet with label holder 14x46 mm, end piece, cover, junction box with strain relief and 3 top clips. Approved for 3-phase through wiring.



Model	E-no	Designation	Pack.
AUD14-214	11 745 93	Socket outlet set, earthed, 8-way, white	1/25

Wall trunking – ProDuct components

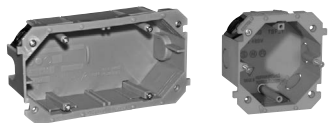
End package



The package includes two end pieces and two covers. Used together with 2-way socket-outlet AUD10 - Jussi or Impressivo boxes.

Model	E-no	Designation	Pack.
AUD31	11 746 07	End package without junction box, white	10/100
AUD31-83	11 746 97	End package without junction box, alu.	10/100

Universal box TBF



Universal boxes snap into the trunking's front opening. 2 strain relief TBF 11 supplied.

Model	E-no	W x L x D mm	Material
TBF 1	11 788 42	79x42,5x79	ABS blue
TBF 2	11 788 43	79x42,5x150	ABS blue

Strain relief TBF



Strain relief for universal box TBF 1, TBF 2.

Model	E-no
TBF 11	11 788 47

Residual current device

(Order item, not stocked.)



Model	E-no	Designation	Pack.
AUD41	11 746 09	Residual current device, 30 mA, A-type, 2-pole - white	1/25

Wall trunking - ProDuct components

2-way socket outlet with box

The socket outlet is approved for through wiring. If several AUD10 sockets are connected in series, 120 mm long intermediate cables (stripped 13 mm) are recommended. One connection package AUD30 or AUD31 is required for each socket-outlet group. Box depth is 45 mm.



Model	E-no	Designation	Pack.
AUD10-214	11 745 69	Socket outlet earthed, 2-way, white	10/100
AUD10-214D	11 745 74	Socket outlet earthed, 2-way, white	10/100

Jussi – ABB mounting box

In the ABB Jussi series, all mounting boxes with screw spacing c-c 60 mm can be fitted in the box, e.g. for switches, KNX-breaker, one-way socket and telecom products. One connection package AUD30 or end package AUD31 is required for each box. Box depth is 45 mm.



Model	E-no	Designation	Pack.
AUD20	11 746 04	A junction box for Jussi products, white	10/100

Impressivo – ABB mounting box

In the ABB Impressivo series, all mounting boxes with screw spacing c-c 60 mm can be fitted in the box, e.g. for switches, KNX-breaker, one-way socket and telecom products. One connection package AUD30 or end package AUD31 is required for each box. Box depth is 45 mm.



Model	E-no	Designation	Pack.
AUD21	11 746 16	Junction box Impressivo apparatus, white	10/100

Connection package

The package contains one end package, a junction box and one cover. Approved for 3-phase through wiring. A maximum of 5 loose connections can be used (max. 5x2.5) in the junction box.



Model	E-no	Designation	Pack.
AUD30	11 746 05	Connection package with the junction box, white	10/100

ABB low voltage products

E-no. below* (except Jussi box) owned by ABB. Distributed via electrical wholesalers.

Jussi



Model	E-no
AUD 20 Junction box ProDuct	11 746 04
AUD 31 End package	11 746 07



Model	E-no
Switch Stair/1-pole	*18 150 22



Model	E-no
1-way socket outlet with USB	*18 150 04



Model	E-no
Switch Crown	*18 150 17



Model	E-no
Centre plate USB	*18 151 87
USB-port 1xUSB C, 1xUSB A	*52 005 18



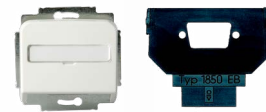
Model	E-no
Pushbutton spri.return 1-pole	*18 150 47



Model	E-no
Centre plate, Jussi, 2xRJ45	*51 008 71
RJ45-insert, 2xKeystone	*18 153 63



Model	E-no
2-pole switch	*18 150 07



Model	E-no
DKS centre plate, Jussi	*51 008 35
Washer DKS system, D-connector 9-way.	*18 151 34

ABB low voltage products

E-no. below* (except Impressivo box) owned by ABB. Distributed via electrical wholesalers.

Impressivo



Model	E-no
AUD 21 Junction box ProDuct	11 746 16
AUD 31 End package	11 746 07



Model	E-no
1-way socket outlet with USB	*18 150 09



Model	E-no
Switch stair/1-pole	*18 165 57



Model	E-no
Centre plate USB	*18 156 79
USB port 1xUSB C, 1xUSBA	*52 005 18



Model	E-no
Switch stair/1-pole	*18 165 51



Model	E-no
Centrumplatta Jussi 2xRJ45	*18 151 48
RJ45-insats, 2xKeystone	*18 153 63



Model	E-no
Pushbutton spring ret. 1 pole	*18 165 69



Model	E-no
DKS centre plate, Impressivo	*18 156 87
Washer DKS system, D-connector 9-way.	*18 151 34



Model	E-no
2-pole switch	*18 165 45